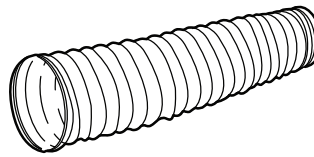


# Use and Care Guide

ProFlex™

## Dryer Vent Duct



### Safety Information



**WARNING:** To reduce the risk of fire or injury to persons; follow basic precautions, including the following:

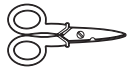
- 1) For use with clothes dryers only; do not use for any other purposes.
- 2) Keep the area around the exhaust opening and adjacent surrounding areas free from the accumulation of lint, dust, and dirt.
- 3) The interior of the exhaust duct should be cleaned periodically by qualified service personnel.
- 4) A gas dryer must always be vented outdoors.
- 5) Regularly inspect the exhaust duct to be sure that it has not become crushed or otherwise restricted.

#### SAVE THESE INSTRUCTIONS

#### NOTICE:

- The clothes dryer shall not be exhausted into a chimney, a wall, a ceiling, or a concealed space of a building.
- Screws which may catch lint shall not be used to secure duct parts together.
- Flexible ducts are to be extended to their full length; any excess duct is to be removed and the duct is to be kept as straight as possible.
- Local building codes shall be followed for installations.
- The maximum length of the duct is 8 ft. No interconnection between ducts is intended.

#### TOOLS REQUIRED



Scissors



Utility knife



Screwdriver

#### HARDWARE REQUIRED (NOT INCLUDED)

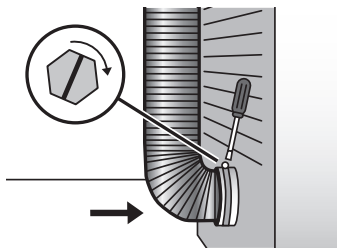


Wormgear clamps (2)

### Installation

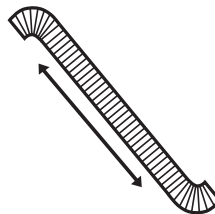
#### 1 SECURING THE DUCT TO THE DRYER

- Slide one end of the duct over the exhaust outlet of the clothes dryer in its permanent position and secure it with a wormgear clamp (not included).



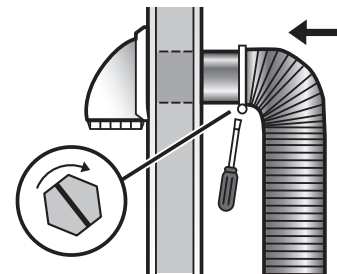
#### 2 STRETCHING THE FLEXIBLE DUCT

- Extend the flexible duct to the required length to reach the existing duct work, leading to the outdoors. Cut off any excess duct with a knife or scissors.



#### 3 SECURING THE DUCT TO THE DUCT WORK

- Secure the duct to the existing duct work with a wormgear clamp (not included).



### Warranty

#### WHAT IS COVERED

All merchandise is warranted to be free from defects in workmanship and material for one year from the date of purchase. This includes normal wear and performance failure on items. The manufacturer will replace or repair at their option.

#### WHAT IS NOT COVERED

This warranty only covers normal wear and performance failure. It does not cover any malfunction, performance failure, or defect arising from the misuse, abuse, neglect, or modification of the product. Any damage or malfunction inflicted upon the product by the user or other external sources, or any failure to comply with the warnings and instructions, is not covered.

For further assistance visit [www.DundasJafine.com](http://www.DundasJafine.com).