

MONTANA® 710, 710i, 760i

RUGGED GPS HANDHELD NAVIGATORS



PRODUCT OVERVIEW

Stay on track and in touch with the rugged Montana® 710/710i/760i handheld GPS navigators. Built to guide you through all kinds of adventures, Montana includes TopoActive mapping, a glove-friendly 5" color touchscreen and long battery life. With an active inReach® subscription and a Montana 710i or 760i featuring built-in inReach technology, you can stay connected via two-way messaging and interactive SOS alerts¹ even when you venture beyond cell coverage.



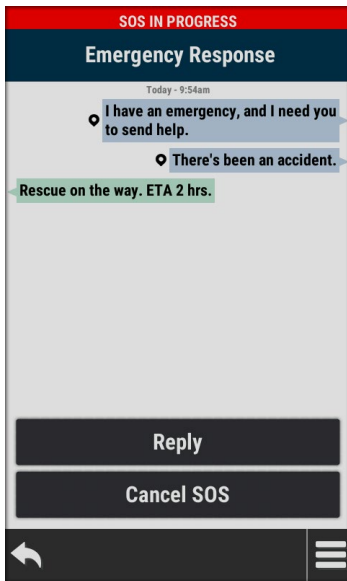
MONTANA® 710, 710i, 760i

RUGGED GPS HANDHELD NAVIGATORS

KEY FEATURES

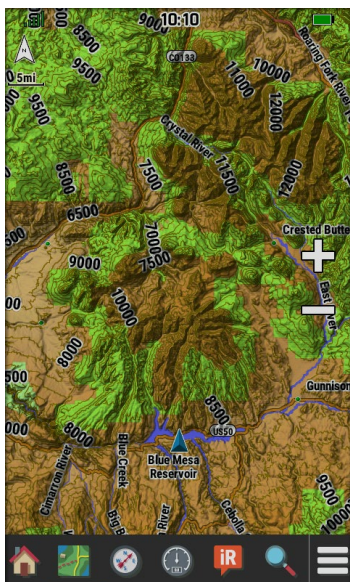
BUILT-IN INREACH® TECHNOLOGY

With a paid inReach subscription, Montana 710i and 760i devices let you stay in touch when you venture beyond cell service. Instead of relying on cellphone coverage, now your messages are transferred via the 100% global Iridium® satellite network².



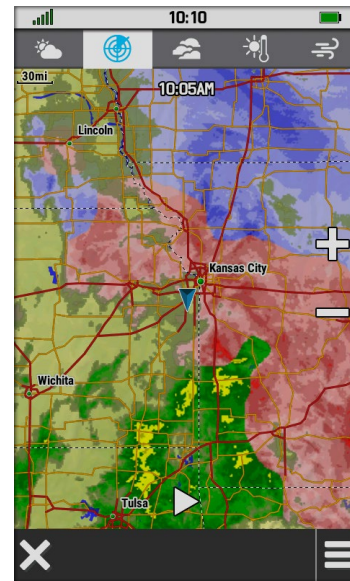
TOPOACTIVE MAPS

To navigate your adventures, use preloaded worldwide [TopoActive maps](#). View terrain contours, elevations, coastlines, rivers, landmarks and more.



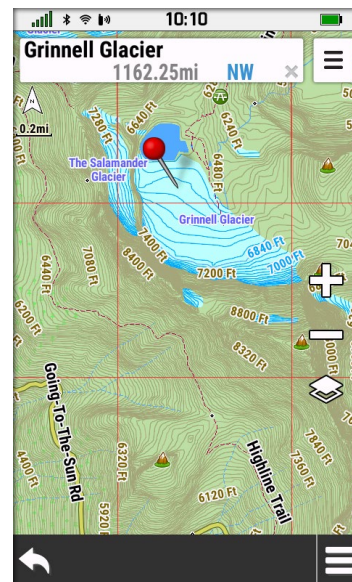
RUGGED, 5" TOUCHSCREEN DISPLAY

This durable, [water-resistant](#) handheld is tested to meet MIL-STD 810 for thermal, shock, water and vibration. It features a glove-friendly 5" touchscreen and is compatible with a variety of robust mounting solutions (sold separately) to best suit your activities.



OUTDOOR MAPS+

Purchase a subscription to [Outdoor Maps+](#) for ongoing access to a wide variety of premium mapping content and regular updates sent right to your Garmin device via Wi-Fi® technology.



MONTANA® 710, 710i, 760i

RUGGED GPS HANDHELD NAVIGATORS

KEY FEATURES

SATELLITE IMAGERY	Access subscription-free, high-resolution satellite imagery with direct-to-device downloads over Wi-Fi® connectivity. See photorealistic overhead views of routes and surrounding terrain, and easily create waypoints based on landmarks.
BUILT-IN CAMERA	Capture images of your adventures with the Montana 760i device, featuring an integrated 8-megapixel autofocus camera. It geotags photos with coordinates, so you can navigate back to favorite sites in the future.
BATTERY LIFE <small>NEW</small>	A rechargeable lithium-ion battery pack provides up to 24 hours of battery life in GPS mode and charges with a standard USB-C® cable.
GARMIN RESPONSESM	In case of an emergency, trigger an interactive SOS message to Garmin Response, our 24/7-staffed international response coordination center. Requires active inReach® subscription and use of Montana 710i or 760i.
GARMIN EXPLORE™ APP	Pair Montana with the Garmin Explore app to plan and review trip data, plus manage your waypoints, courses and activities.
MULTI-GNSS SUPPORT	Receive access to GPS and Galileo satellite networks, enabling you to track in more challenging environments than GPS alone.
LOCATION SHARING¹	Use live tracking to let your loved ones follow your location, when paired with your smartphone. With an active inReach subscription on Montana 710i or 760i, you can also use your live tracking page so followers can see your progress, ping your device to see your GPS location and exchange messages during your trip.
OPTIONAL INREACH WEATHER	Available inReach weather forecast service provides detailed updates directly to your Montana handheld or paired devices, so you'll know what to expect en route (available on Montana 710i and Montana 760i only and requires inReach subscription).
CITY NAVIGATOR MAPS	Seamlessly transition from trails to road navigation with preloaded City Navigator street mapping, which guides your drive with easy-to-follow turn-by-turn directions (included with Montana 710i and 760i. Sold separately for Montana 710).
FEDERAL PUBLIC LAND BOUNDARIES	Optional display of federal public land boundaries on topographical maps helps you know that you're venturing where you're supposed to be.
MORE MEMORY <small>IMPROVED</small>	With 32 GB of onboard memory, you can download even more maps to suit your various outdoor activities such as BlueChart® g3 charts for the water (sold separately).
ABC SENSORS	Navigate your next trail with ABC sensors, including an altimeter for elevation data, barometer to monitor weather and 3-axis electronic compass.
ACTIVE WEATHER	Use cellular connectivity ² to access up-to-date active weather forecasts through the Garmin Connect™ app.
VEHICLE MOUNTS	A variety of compatible mounts (sold separately) lets you adapt your Montana 700 series navigator for use on ATVs, boats, cars, motorcycles, RVs or other vehicles.
DOG TRACKING	For hunters and trainers, the Montana series syncs with compatible Alpha® series handhelds (sold separately) to help track sporting dogs in the field.
EXPEDITION MODE	Trek far and wide off-grid. Use expedition mode, an ultralow-power GPS reference, to keep Montana tracking for more than two weeks between recharges.

MONTANA® 710, 710i, 760i

RUGGED GPS HANDHELD NAVIGATORS

PRODUCT COMPARISON

MONTANA 710



MONTANA 710i



MONTANA 760i



	MONTANA 710	MONTANA 710i	MONTANA 760i
5" DUAL-ORIENTATION, TOUCHSCREEN DISPLAY	480 x 800 pixels	480 x 800 pixels	480 x 800 pixels
ABC SENSORS	●	●	●
SATELLITE IMAGERY	●	●	●
MULTI-GNSS SUPPORT	●	●	●
ACTIVE WEATHER	●	●	●
TOPOACTIVE MAPS	●	●	●
FEDERAL PUBLIC LAND BOUNDARIES	●	●	●
CITY NAVIGATOR MAPS		●	●
IRIDIUM® SATELLITE NETWORK CONNECTIVITY²		●	●
OPTIONAL INREACH WEATHER¹		●	●
TWO-WAY MESSAGING WITHOUT CELL COVERAGE¹		●	●
GARMIN RESPONSESM EMERGENCY COORDINATION CENTER¹		●	●
INTERACTIVE SOS¹		●	●
8-MEGAPIXEL CAMERA			●
BATTERY LIFE	Up to 24 hours (GPS mode) Up to 432 hours (Expedition mode)	Up to 24 hours (GPS mode) Up to 432 hours (Expedition mode)	Up to 24 hours (GPS mode) Up to 432 hours (Expedition mode)
WATER RATING³	IPX7	IPX7	IPX7

MONTANA[®] 710, 710i, 760i

RUGGED GPS HANDHELD NAVIGATORS

PRODUCT CONFIGURATIONS

MONTANA 710/760 SERIES
SCHEDULE B: 8526910080
HTS: 8526.91.0040

MONTANA SERIES

AVAILABLE

INCLUDES

COUNTRY OF ORIGIN

Now

Montana 710/760 series device, high-capacity Li-ion battery pack, USB cable and documentation.

Made in Taiwan. Cable made in China, Taiwan or Philippines.

DESCRIPTION

SKU

UPC

MRP (USD)

MRP (CAD)

Montana 710

010-02963-00

753759336851

\$649.99

\$919.99

Montana 710i

010-02964-00

753759336882

\$799.99

\$1,119.99

Montana 760i

010-02964-10

753759336912

\$899.99

\$1,259.99



PHYSICAL SPECIFICATIONS

MONTANA 710/760 SERIES

Unit dimensions (WxHxD):	Montana 710: 3.4" x 7.2" x 1.3" (8.76 x 18.3 x 3.27 cm) Montana 710i/760i: 3.6" x 7.2" x 1.3" (9.19 x 18.3 x 3.27 cm)
Display size:	2.55" x 4.25" (6.5 x 10.8 cm); 5" diag (12.7cm)
Display resolution (WxH):	480 x 800 pixels
Display type:	WVGA transfective, dual orientation
Weight:	14.5 oz (410 g)
Battery type:	Rechargeable lithium-ion
Battery life:	<p>Montana 710: Up to 24 hours in GPS mode. Up to 440 hours in Expedition mode. Up to 1 year when powered off.</p> <p>Montana 710i/760i: Up to 24 hours in GPS mode. Up to 24 hours in GPS mode with a text message or location sent every 10 minutes. Up to 440 hours in Expedition mode. Up to 400 hours in Expedition mode with a text message or location sent every 30 minutes. Up to 1 year when powered off.</p> <p>Note: Battery life estimates are with full sky view and can be significantly impacted by obstructions or tree cover.</p>

PACKAGING SPECIFICATIONS

MONTANA 710/760 SERIES

Gift box dimensions (WxHxD):	8.5" x 2.3" x 5.9" (21.7 x 5.9 x 15.0 cm)
Gift box weight:	Montana 710: 20.5 oz (582 g) Montana 710i/760i: 22.7 oz (644 g)
Master carton dimensions (WxHxD):	12.7" x 11.8" x 17.6" (32.2 x 29.9 x 44.8 cm)
Master carton weight:	Montana 710: 27.5 lbs (12.5 kg) Montana 710i/760i: 30.2 lbs (13.7 kg)
Master carton quantity:	20

PRODUCT COPY

Product copy for Montana 710/760 series can be downloaded from the Dealer Resource Center.

VIDEOS




MONTANA® 710, 710i, 760i

RUGGED GPS HANDHELD NAVIGATORS

MERCHANDISING

DUMMY UNITS

	SKU	IMAGE
MONTANA 710	010-M2963-00	
MONTANA 710i	010-M2964-00	
MONTANA 760i	010-M2964-10	

WOOD PEDESTAL



This display is designed for small spaces and should be used inside a glass case. When featuring multiple products, pedestals may be merchandised side by side. Use with a dummy unit, bracket and small product card, both ordered separately.

SKU: **M00-10801-00**
 Size: 2.9" W x 4.3" D x 4.86" H

TRAY KIT SYSTEM



This display is great for small spaces and should be used inside a glass case. Display 1 Garmin dummy unit on each tray kit. For larger product assortments, tray kits may be merchandised side by side. Use with dummy units, small product cards, common features product cards, brackets, graphic back panels and trays, all ordered separately.



GRAPHIC FOR TRAY KIT
 SKU: **M00-00941-04**
 Size: 7" W X 9" H



SMALL TRAY
 SKU: **M00-00527-00**
 Size: 7" W x 6" D

ACRYLIC NONPOWERED FREESTANDING DISPLAY WITH WHEELS



This display ships as one full piece with wheels; is nonpowered and great for small, narrow spaces; and includes a lock and key. These displays are fully customizable and fit a variety of Garmin products. Displays up to 12 Garmin dummy units. Use with dummy units, small product cards, common features product cards, brackets and pedestals, all ordered separately.

Contact your inside sales rep or order administration representative to place an order for the display if you meet the order requirements.

SKU: **M00-00982-00**
 Size: 16" W x 15" D x 68.5" H (approximately)
 Delivered by FedEx Freight
 Weight on pallet: 150 lbs (approximately)
 Dimensions on pallet: 48" W x 40" D x 80" H (approximately)

BLUE WEDGE MAGNETIC GRAPHIC

SKU: **M00-00909-00**
 Size: 14.35" W x 16" H

MONTANA® 710, 710i, 760i

RUGGED GPS HANDHELD NAVIGATORS

MERCHANDISING CONTINUED

INTERCHANGEABLE MERCHANDISING COMPONENTS THAT CAN BE USED ON THE PEDESTALS, TRAY KITS AND ACRYLIC NONPOWERED FREESTANDING DISPLAY

EXTRA LARGE HANDHELD BRACKET

SKU: **M00-00780-00**
Size: **2.25" H x 3.5" W**



SMALL PRODUCT CARDS

Size: 2" H x 2.5" W



MONTANA 710
SKU: **M00-00969-01**

MONTANA 710i
SKU: **M00-00969-02**

MONTANA 710
SKU: **M00-00969-03**

TRAY KIT/ACRYLIC DISPLAY COMMON FEATURES PRODUCT CARD – INREACH

SKU: **M00-00817-02**
Size: **6.75" L x 4.0" H**



GARMIN BRANDED FREESTANDING/ COUNTERTOP LIGHT BOX DISPLAYS

Showcase a wide range of Garmin products with these displays featuring a bright light box graphic. They can be customized by ordering dummy units, brackets, product cards, common features product cards and light box graphics. You can feature up to 7 dummy units on the freestanding display and up to 3 dummy units on the countertop display.

Contact your inside sales rep or order administration representative to place an order for the display if you meet the order requirements.

Freestanding Light Box Display:
24" W x 62.98" T x 23.166" D

Countertop Light Box Display:
12" W x 18.08" T x 14" D



GARMIN BRANDED GRAY FREESTANDING/ COUNTERTOP VIDEO DISPLAYS

Order these components to update your freestanding or countertop display: dummy units, brackets, SD™ card, product card and graphics. Contact your inside sales rep or order administration representative to place an order for the updated components.



Final artwork is subject to change from images shown in the merchandising section. For more information on merchandising, please visit the [Dealer Resource Center](#).

MONTANA® 710, 710i, 760i

RUGGED GPS HANDHELD NAVIGATORS

COMPATIBLE SUBSCRIPTIONS



With a paid subscription to [Outdoor Maps+](#), you'll have ongoing access to a wide variety of additional premium mapping across the globe that is regularly updated and delivered directly to your compatible Garmin device via Wi-Fi® connectivity. An annual subscription is \$49.99 USD.

COMPATIBLE APPS

GARMIN EXPLORE™ APP



Use the Garmin Explore app to plan your trip, see your track on a map, save an activity and view a course highlight showing how much farther to your destination.

GARMIN MESSENGER™ APP



Never lose touch with friends and family. The Garmin Messenger app brings rich network messaging features, including group messaging, to any compatible smartphone.

COMPATIBLE PRODUCT OVERVIEW



FĒNIX® 8 SERIES

Premium multisport GPS smartwatches with solar charging or AMOLED displays.



INSTINCT® 2X SERIES

Rugged outdoor GPS smartwatches with optional solar charging for unlimited battery life.



ENDURO™ 3 SERIES

Lightweight ultraperformance GPS smartwatches with extreme battery life, detailed mapping and endless performance features for ultra-endurance athletes looking to push limits.



ALPHA® SERIES HANDHELDS


Reliable handhelds for hunters who need a device to track and train your dogs in the field. Track the pack, train the pack and lead the pack with these rugged handhelds.

For a complete list of compatible Garmin devices visit [Garmin.com](https://www.garmin.com)

MONTANA® 710, 710i, 760i

RUGGED GPS HANDHELD NAVIGATORS

COMPATIBLE ACCESSORY OVERVIEW

	SKU	UPC	MSRP	DESCRIPTION	IMAGE
HIGH CAPACITY LITHIUM-ION BATTERY PACK COMING SOON	010-12881-11	753759336950	\$99.99	Use this as a replacement battery or spare for your compatible Garmin device.	
SUCTION CUP MOUNT WITH SPEAKER (USB-C®) NEW	010-12881-10	753759336943	\$129.99	Simply suction this mount to the windshield or any smooth, flat surface ¹ and use your compatible device while navigating. Kit includes mount with an integrated speaker, a USB-C to USB-C data cable and a suction cup for easy installation. Your device will charge when mounted.	
MOTORCYCLE/ATV MOUNT KIT AND AMPS RUGGED MOUNT WITH AUDIO/POWER CABLE	010-12881-03	753759246792	\$149.99	Simply snap your compatible device – in portrait or landscape mode – into the rugged mount ¹ to navigate while on your motorcycle or ATV. Kit includes mount, hardware, AMPS arm/ball socket and cable with bare power, audio and data wires.	
BICYCLE HANDLEBAR MOUNT	010-12881-01	753759246778	\$49.99	Simply snap your compatible device — in portrait or landscape mode ¹ — into the 22 mm or 32 mm rugged mount and take it anywhere. Included mounts and hardware attach to any standard bicycle handlebar.	
AMPS RUGGED MOUNT WITH AUDIO/POWER CABLE	010-12881-08	753759258931	\$99.99	Mount your compatible device on your motorcycle or ATV. Kit includes mount, hardware and a cable with bare power, audio and data wires.	
USB-C AC ADAPTER	010-13304-00	753759312152	\$49.99	Use this portable USB-C power adapter to charge compatible devices from any standard wall outlet. This adapter is compatible with USB-C cables with 5V/3.0A output power for quick charging.	
USB CABLE TYPE C TO TYPE C (0.5 m)	010-13323-00	753759322854	\$14.99	Connect this cable to a USB-C® port to recharge your compatible device and to transfer data to and from your computer.	

¹Active satellite subscription required. Some jurisdictions regulate or prohibit the use of satellite communication devices. It is the responsibility of the user to know and follow all applicable laws in the jurisdictions where the device is intended to be used.

²To access the Iridium satellite network for live tracking and messaging, including SOS capabilities, an active satellite subscription is required.

³See Garmin.com/waterrating.

Wi-Fi is a registered trademark of the Wi-Fi Alliance.

Please note: The ECCNs and Classification numbers provided represent the opinion of Garmin International, Inc. of the proper classifications for the products today (based on the original software and/or original hardware). Classifications are subject to change. Under the U.S. export regulations, the U.S. Government assigns your organization or client, as exporter/importer of record, the responsibility for determining the correct classification of any item at the time of export/import. Depending on the products, the customer, or the country of destination, an export license may be required by the Department of Commerce prior to shipment. The Department of Commerce's Bureau of Industry and Security (former Bureau of Export Administration) website (<http://www.bis.doc.gov>) provides information that might be useful to you in determining whether you need to obtain a license for a particular shipment. To be clear, if an item described above does require a validated export license, it would be the exporter's responsibility to obtain this license prior to exportation.