



Ambient core lighting kit

2 Chase mini strips with controller

Visit [HeiseLED.com](https://www.HeiseLED.com) to view the available installation parts and accessories.

Watch a Complete Installation of this product on: [youtube.com](https://www.youtube.com)



Connect controller app



Part Components

- (2) 3ft Chase LED ambient mini strips with 3ft cable
- (1) Heise Connect chase low voltage controller
- (1) RF remote
- (1) 6ft extension cables
- (1) Adhesive pad
- (4) Cable ties

Product Features

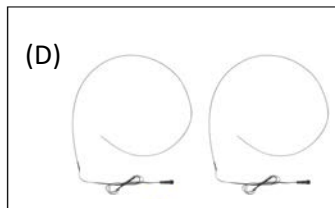
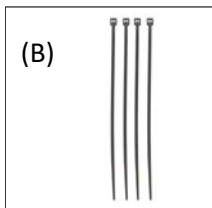
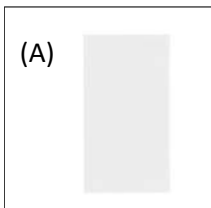
- Quickly and easily add brilliant ambient lighting to any vehicle with this two piece kit. This kit includes two chasing LED mini strips, along with a Heise Connect Controller and RF remote. Each light has ninety four segments for extremely fluid effects, that are controlled via the Heise Connect mobile app.
- Cut to length
- For interior use

Tools Needed

- Panel pry tool
- Marker
- Scissors
- Wire stripper
- Crimper

What's in the box:

(A) Adhesive pad (B) Cable ties, (C) Heise connect controller and remote, (D) Ambient LED strips, (E) Extension cable

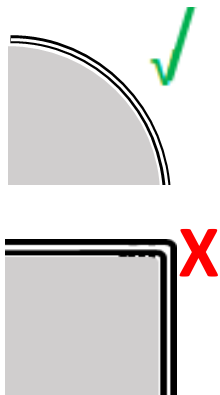


Notes before installing

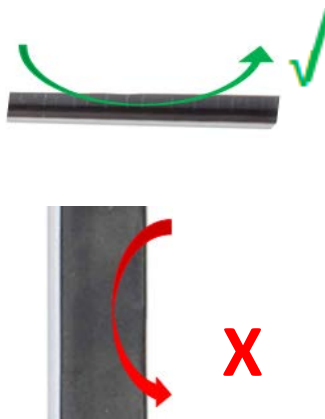
- Do not cut the 3 wire cable on the strip, as the wires are not marked. This makes it easy to cross wires when reattaching, which will cause immediate failure of the strip.



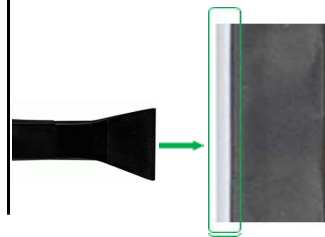
- Maximum bend radius is 2.75". Bending the strip around a sharper curve will break the strip and cause immediate failure.



- The mini strip will only flex perpendicular to the light pipe.



- When installing the mini strips, only apply pressure to the exposed light pipe. Applying force to the taped area may cause damage to the LEDs under the tape.



- Find locations to install the strips. Good locations have these attributes:
 - Not in the driver line of sight
 - Does not have bends exceeding the 2.75" radius maximum
 - Area is flexible
 - Gap large enough to fit strip (strip is 3/32" thick and 3/16" deep)



- Position the strip over the desired location in the orientation that the strip will be installed. Make sure to allow for the wires connecting to the strip, so that they will not be pinched or stressed.



- Using a marker (silver color works well), mark the point where the strip needs to be cut to fit the location. Be careful not to mark the vehicle in the process. Also, make note if a straight cut or angled cut would be a better fit. If making an angled cut, mark the angle on the strip. With a pair of scissors, cut the strip as marked.

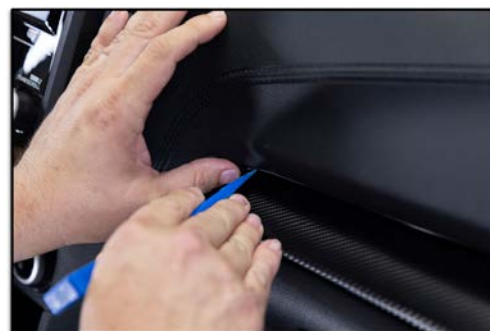


Straight cut



Angled cut

- Position the cut strip in the location as it was previously. Beginning at that start of the strip (wire end), press the strip into the gap. Using a pry tool to spread the panels will assist in setting the strip. Pressure can be applied with the pry tool to the light pipe. Be careful not to stress the strip during this process. Once the strip is set, use the same technique to tuck the strip's wire.



- Find a suitable and safe location to mount the controller. Typically, good locations can be found under the driver's side of the dash. Clean the location with rubbing alcohol and let dry. Then, apply the double sided pad to the rear of the controller and stick in place.



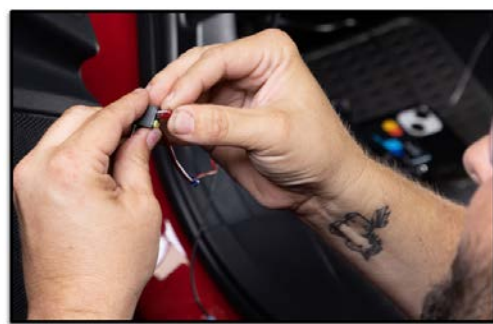
- Route the strip wires to the controller. Depending on the location that the controller was mounted, the included extension cable may be needed to cover the distance of the run. Be mindful routing the wires, avoid moving components and hot surfaces.



- Locate the output connectors on the controller, and find the arrows marked on the heads. Align the arrow on the strip wire head with the arrow on the output head. Connect the strip on the driver's side the either of the "left output" connectors, and the strip on passenger's side to either of the "right output" connectors. To connect press the heads together firmly, then screw the retaining cap clockwise.



- The second cable, coming off the opposite side of the controller is the power connections. The red wire should be fused (10A) and connected to a switched power source. We recommend connecting an add-a-fuse adapter (not included) that matches the vehicles fuse type, to the red wire and connecting to a switched circuit in the dash fuse box (15A or greater). A service manual can assist in identifying. The black wire should be connected to a factory chassis ground point. This can generally be found in the driver kick panel.



Add-a-fuse part numbers

ATC fuse: ATCDT-1

ATR fuse: ATRDT-1

ATM Mini fuse: ATMDT-1

ATM Low Profile fuse: ATMLPDT-1



- Switch on vehicle, and test functionality. If everything is working correctly, reassemble any removed panels and/or gaskets.



NOTE: Set pixel count to 94

