



Thanks so much for choosing our wipe warmer - originally voted one of California's most useless baby items! We could not be more proud of the controversy it has generated. Enjoy!

hiccapop prides itself on stellar customer service, so if you ever have a question, please drop us a line and one of our team members will promptly take care of you. And remember to register your wipe warmer at [hiccapop.com](https://hiccapop.com) to receive 20% off your next hiccapop item!

## Now onto our favorite part... our shameless plug for reviews!

For us, Amazon reviews are as important to our success as a good night's sleep is to a new parent, because they help spread good hiccavibes across America. So if you could please take a minute to review your wipe warmer, we'd sure appreciate it. And to make it really easy (which is important when kissing up like this), all you have to do to leave your review is go to:

[amazon.com/ryp](https://amazon.com/ryp)



See reverse side for instructions and tips!



Instructions (even ours) are generally boring, but please read them and just maybe you will find something useful. Here it goes...

**STEP 1:** Load up 50-80 wipes and gently push the top wipe through the rubber opening in the main lid and lock the two slide locks.

**STEP 2:** Find a couple of good locations to keep your wipe warmer. You'll notice that we included two power bases to make it easy for you to bring your wiper warmer between rooms.

**STEP 3:** Plug in the power bases, place the wipe warmer on one of them, and let the wipes warm for a few hours.

Remember, your wipe warmer works with both 120 & 240 voltages which means you can use and travel with it anywhere in the world!

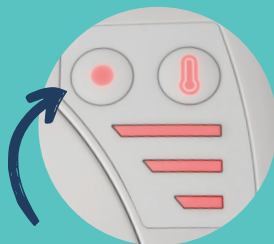
### Special Instruction #1:

To adjust the temperature of your wipe warmer, press the thermometer button. When one bar is lit, your warmer is on the low setting, when two bars are lit it's on the medium setting, and three bars indicate you're on the highest setting. Easy.



### Special Instruction #2:

To use the nighttime changing light, press the button with the red dot. Not to worry, the light automatically shuts off after 10 minutes.



### hiccatip #1

We find "continuous feed" wipes work best because they conveniently pull the next wipe to the top.

### hiccatip #2

When filling your wipe warmer, pour a half cup of water over the wipes to prevent them from drying out too quickly. Try also adding drops of lavender essential oil to the water for a calming effect for your little one.

- This card is 130 mm wide x 257 mm tall
- mod. 071024