

APPROACH® R50

PREMIUM GOLF LAUNCH MONITOR AND SIMULATOR



PRODUCT OVERVIEW

Get a tee time anytime with the Approach R50 premium launch monitor and simulator. The 10" built-in color touchscreen display brings more than 43,000 golf courses to life through the Home Tee Hero golf simulator (active Garmin Golf™ membership required).

With detailed stat tracking for each club in your bag, users can access more than 15 ball and club metrics (included tracking sticker required) — including spin rate and spin axis metrics, both indoors and outside — all measured by 3 high-speed cameras.

Whether you're training to win or just having fun, Approach R50 puts you on course to play your best from first drive to final putt.



APPROACH® R50

PREMIUM GOLF LAUNCH MONITOR AND SIMULATOR

KEY FEATURES

COLOR TOUCHSCREEN

NEW

Use Approach R50 year-round and view your game straight from the 10" built-in color touchscreen display.



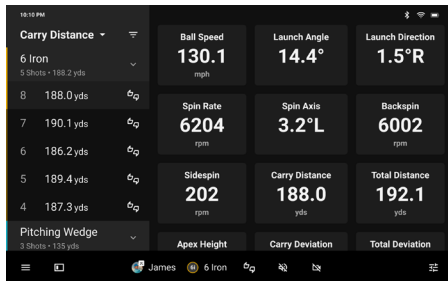
PLAY 43,000+ COURSES

Play virtual rounds with up to four players on more than 43,000 courses with enhanced graphics on the Home Tee Hero¹.



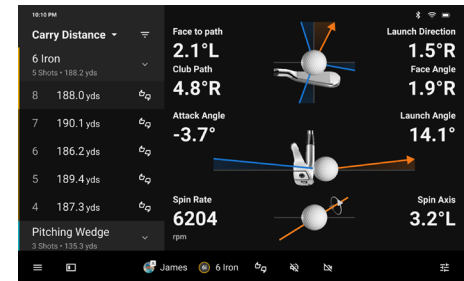
BALL METRICS

See direct [measurements](#) of your ball speed and launch angle as well as spin rate, spin axis and more.



CLUB METRICS

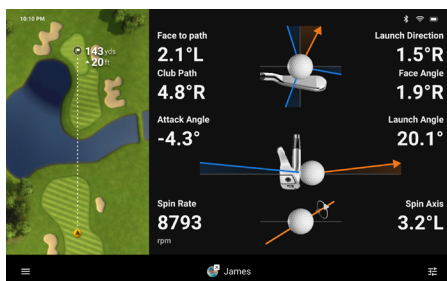
Dial in your swing with direct [measurements](#) of your club speed and angles².



HIGH-SPEED CAMERAS

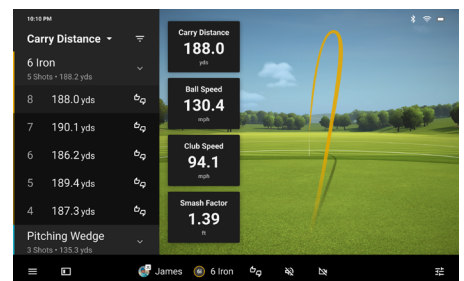
NEW

Fine-tune your form with this premium launch monitor and simulator that utilizes a 3-camera system for precision metrics.



TRAINING MODE

Track stats for each club, and get a shot dispersion chart based on an advanced ball flight trajectory model.



APPROACH® R50

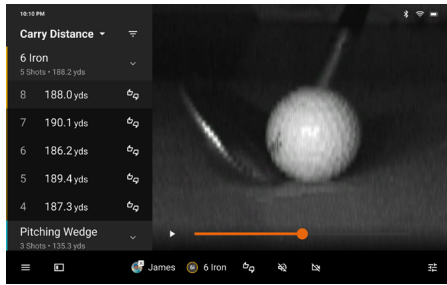
PREMIUM GOLF LAUNCH MONITOR AND SIMULATOR

KEY FEATURES CONTINUED

IMPACT VIDEOS

NEW

View high-speed impact videos for immediate visual feedback on how you're striking each shot.



PUTTING

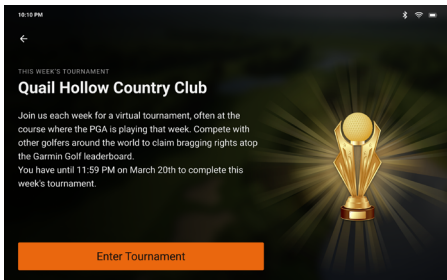
NEW

Work on all parts of your game with putting available during simulator play¹.



LEADERBOARDS

Participate in a [weekly tournament](#) with scores posted to our global leaderboard¹.



CARRYING CASE

NEW

Easily set up, stow or take your device to the range with an included carrying case.



BUILT-IN BAROMETER

NEW

A built-in barometer measures atmospheric pressure to provide accurate carry distances based on your location.

EXTEND YOUR DISPLAY

NEW

Get an unmatched simulator experience by connecting to a monitor or projector via HDMI for additional customizable viewing options.

HOME TEE HERO

IMPROVED GRAPHICS

See enhanced graphics while playing the Home Tee Hero¹ from the vibrant color touchscreen display.

THIRD-PARTY SIMULATORS

Approach R50 is compatible with your favorite third-party simulators to expand your playing options, including [GSP Pro](#), [Awesome Golf](#), [E6 Connect](#) (coming soon) and [E6 Apex](#) (coming soon).

GARMIN GOLF™ APP

Download the [Garmin Golf app](#) on your compatible smartphone to view metrics after your Approach R50 session is completed.

BATTERY LIFE

Get up to 4 hours of battery life for playtime on the range.

CLUB TRACKING STICKERS

NEW

Use the club tracking stickers for accurate club metrics; 250 stickers are included.

APPROACH® R50

PREMIUM GOLF LAUNCH MONITOR AND SIMULATOR

PRODUCT COMPARISON

APPROACH® R10



APPROACH R50



PHYSICAL DIMENSIONS	3.5" x 2.8" x 1.0" (88.5 x 70.25 x 25.0 mm) without tripod	16.5" x 10.6" x 7.5" (419.1 x 269.2 x 190.5 mm)
WEIGHT	Without tripod: 5.22 oz (148 g) With tripod: 7.79 oz (220.8 g)	9 lbs (4.1 kg)
DISPLAY TYPE AND RESOLUTION		10" LCD, color touchscreen, 800 x 1280 pixels
BATTERY TYPE	Internal rechargeable lithium-ion; power or charge by plugging included USB cable into external power source	Internal rechargeable lithium-ion; power or charge by plugging included AC adapter/power cable into standard wall outlet
BATTERY LIFE	Up to 10 hours	Up to 4 hours
WATER RATING	IPX7	IPX3
INTERFACE	microUSB	HDMI, USB-C®
CONNECTIVITY	BLUETOOTH®	BLUETOOTH, Wi-Fi®
SMARTPHONE CONNECTIVITY	•	
TITLEIST® RCT GOLF BALLS	Recommended	
MEASUREMENT TECHNOLOGY	Radar	3 high-speed cameras
TARGET PRACTICE	•	•
DRIVING RANGE MODE	•	•
SAVE CLUB STATS	•	•
HOME TEE HERO¹	•	• (enhanced graphics)
COMPATIBLE WITH THIRD-PARTY GOLF SIMULATORS	•	•
AUTO SWING VIDEO RECORDING	•	
HIGH-SPEED IMPACT VIDEOS		•
BUILT-IN BAROMETER		•
PUTTING IN GOLF SIMULATOR		•
CLUB TRACKING STICKERS		Included (5 sheets, 250 stickers total)

APPROACH® R50

PREMIUM GOLF LAUNCH MONITOR AND SIMULATOR

PRODUCT CONFIGURATION

SCHEDULE B: 9506390080
HTS: 9506.39.0080

APPROACH R50



AVAILABLE	INCLUDES	COUNTRY OF ORIGIN		
Now	Approach R50 premium golf launch monitor and simulator, carrying case, AC adapter and power cord, club tracking stickers and documentation	Made in Taiwan. Carrying case, AC adapter and power cord made in Taiwan or China.		
DESCRIPTION	SKU	UPC	MRP (USD)	MRP (CAD)
Approach R50 Premium Golf Launch Monitor and Simulator	010-02542-00	753759340285	\$4,999.99	\$6,749.99

SPECIFICATIONS

Physical dimensions	16.5" x 10.6" x 7.5" (419.1 x 269.2 x 190.5 mm)	Battery life	Up to 4 hours
Weight	9 lbs (4.1 kg)	Water rating	IPX3
Display type	LCD, color touchscreen	Interface	HDMI, USB-C®
Display size	10"	Connectivity	BLUETOOTH® and Wi-Fi® technologies
Display resolution	800 x 1280 pixels	Golf metrics included	Club head speed, club face angle, club path angle, angle of attack, ball speed, launch angle, launch direction, spin axis, spin rate, face to path, apex height, smash factor, carry distance, total distance, total deviation distance
Battery type	Internal rechargeable lithium-ion		
Charging/power	Power or charge the device by plugging included AC adapter/power cable into wall outlet		

PACKAGING SPECIFICATIONS



Gift box dimensions (WxHxD)	15.2" x 20.7" x 11.8" (38.7 x 52.5 x 30.0 cm)
Gift box weight	18 lbs (8.2 kg)
Master carton dimensions (WxHxD)	16.3" x 21.8" x 12.8" (41.5 x 55.3 x 32.4 cm)
Master carton weight	20 lbs (9.1 kg)
Master carton quantity	1

PRODUCT COPY

Product copy for Approach R50 can be downloaded from the [Dealer Resource Center](#).

APPROACH® R50

PREMIUM GOLF LAUNCH MONITOR AND SIMULATOR

VIDEOS

FEATURE AND BENEFIT VIDEO

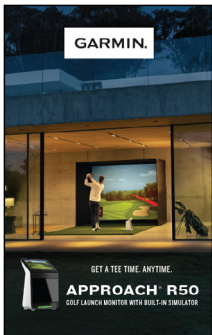


TRAINING VIDEO



MERCHANDISING

APPROACH R50 EASEL SIGN



Place the sign next to your Approach R50 product.

SKU: M00-00822-01

Size: 5.5" W x 8.75" H

COMPATIBLE SUBSCRIPTION

GARMIN GOLF™ MEMBERSHIP

With a [Garmin Golf membership](#), you can access a variety of premium golf app features — with options for monthly and annual memberships so you can stay on top of your game year-round.

Play **Home Tee Hero** virtual rounds on more than 43,000 courses around the world, and take part in a weekly tournament with scores posted to our global leaderboard on the Garmin Golf app.

Plus, you can get **green contour data** in the Garmin Golf app or on your compatible Garmin device to help read greens when you're out on the real course (green contour data not available on the Approach R50 device).

MEMBERSHIP SUBSCRIPTION

Monthly: \$9.99

Annually: \$99.99



APPROACH® R50

PREMIUM GOLF LAUNCH MONITOR AND SIMULATOR

COMPATIBLE ACCESSORY OVERVIEW

AC ADAPTER

NEW



SKU: **010-13074-00**
UPC: **753759344825**

Use this replacement AC adapter with compatible power cable to power and charge your Approach R50 launch monitor.

MSRP: **\$59.99**

POWER CABLE (U.S. PLUG)

NEW



SKU: **010-13074-01**
UPC: **753759344832**

Connect this replacement power cable to your compatible AC adapter and plug it into a U.S. wall outlet to power and charge your Approach R50 launch monitor.

MSRP: **\$14.99**

CLUB TRACKING STICKERS

NEW



Golf club for reference only.

SKU: **010-13074-05**
UPC: **753759344870**

Place one club tracking sticker on your golf club while using the Approach R50 launch monitor to get accurate club metrics. There are 5 sheets of 50 stickers (250 stickers total) included.

MSRP: **\$29.99**

For more information, please visit the [product page](#).

¹Subscription required

²Included tracking sticker required

The Bluetooth word mark and logos are registered trademarks owned by Bluetooth SIG, Inc. and any use of such marks by Garmin is under license. Wi-Fi is a registered trademark of the Wi-Fi Alliance.

Please note: The ECCNs and Classification numbers provided represent the opinion of Garmin International, Inc. of the proper classifications for the products today (based on the original software and/or original hardware). Classifications are subject to change. Under the U.S. export regulations, the U.S. Government assigns your organization or client, as exporter/importer of record, the responsibility for determining the correct classification of any item at the time of export/import. Depending on the products, the customer, or the country of destination, an export license may be required by the Department of Commerce prior to shipment. The Department of Commerce's Bureau of Industry and Security (former Bureau of Export Administration) website (<http://www.bis.doc.gov>) provides information that might be useful to you in determining whether you need to obtain a license for a particular shipment. To be clear, if an item described above does require a validated export license, it would be the exporter's responsibility to obtain this license prior to exportation.