

# Smart Floor Lamp USER MANUAL

## Easy Installation

The Smart home device only supports 2.4Ghz frequency.If your router supports both 2.4Ghz and 5Ghz frequency.The 5G network is usually labeled as "Router-5G" so please connect to the other one.

Each smart home device can only be registered to one account. but it can be shared with others by using the sharing function of the app.  
(Only 6 mobile phone)

## Download and Install eco4life App

Methods 1:Scanning the bellow QR code to download "eco4life" App

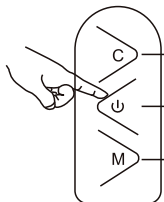
Methods 2:Download the app by searching "eco4life" App on Google Play (Android) or Apple Store(IOS).



Please Enter the "eco4life" App, Click "Sign up" to Register an account and log in.

## Ways to Operation:

### (1) Manual Control by 3 Buttons

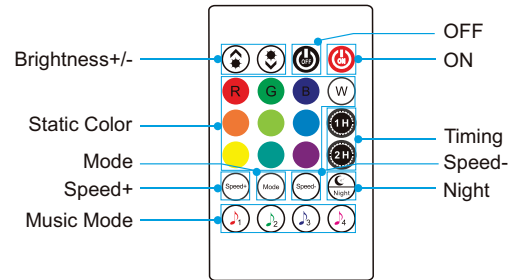


**C:** Switch light mode.

**U:** ON/OFF to reset, and start to connect network.

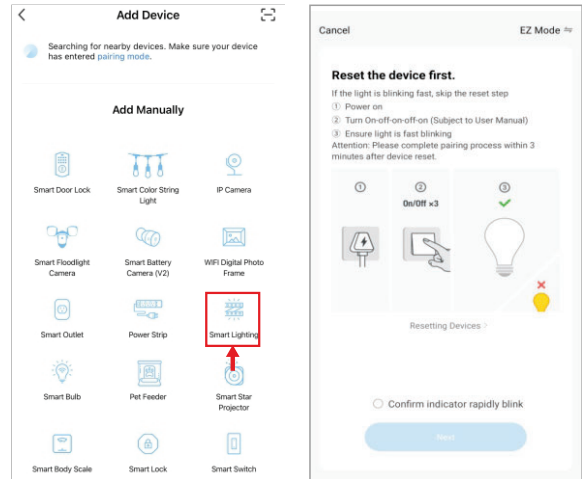
**M:** Enter the music mode, exit the music mode, the red light is always on.

### (2) Remote Control



## Quick Mode Configurations:

1. Press "add device" icon and choose "Smart lighting" from app.
2. Select your 2.4Ghz wi-fi network and enter password.
3. EZ mode connect-Confirm the light is blinking fast. (If not, please long press the power button on the controller for about 5 to 7 seconds until the strip lights blinking rapidly.) Click "confirm the indicator rapidly blink".
4. The device enters the state of connecting and distributing the networks, then waiting for the completion of adding the device.



## Support

For more troubleshooting help, please visit <https://eco4lifehome.com/pages/contact-us> for web support or send us an email at [cs@sonicgracehome.com](mailto:cs@sonicgracehome.com).

You can also go to <https://mall.eco4lifehome.com/pages/support> to download full product manual.