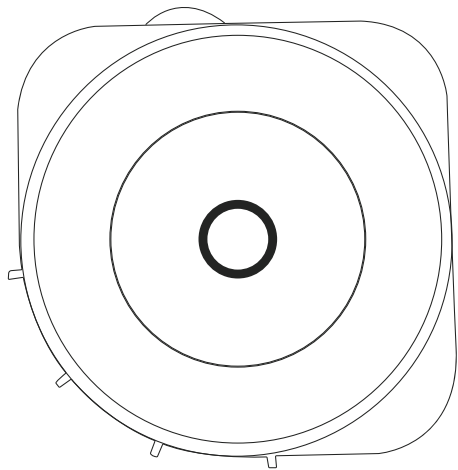




Smart Star Projector

User Manual



MODEL: SK23

NOTICE

- Please keep the product away from open flames.
- Please keep away from water to avoid damage.
- Please keep out of reach of children. Children may use it under adult supervision.
- Please cut off power supply if a hazard occurs.
- Please use the product in line with instructions.
- Do not look directly at the laser to avoid damaging your eyes.
- Do not point the light into the sky within 10 nautical miles(18.5km) of an airport.
- Do not disassemble and assemble it by yourself.
- For indoor use only.(Works better in a dark environment)

INTRODUCTION

The smart star projector is an entertaining electronic device and able to project the starry sky on your ceiling with floating clouds that have a lot of changeable colors,with thousands of stars filling the ceiling,it will give you the best visual experience of milky way and Nebula without having to step one foot outside of your room.

Applying to multiple and create a romantic and dreamy atmosphere easily. sleep under the stars and enjoy the starry sky that now belongs to you. We hope you have a great experience with this incredible product.

SPECIFICATION

| | |
|--------------------------|---|
| Power Input | 5V 1A |
| Classification of lasers | Class 1 |
| Work Temperature | 14°F~95°F(-10~40°C) |
| Wireless Type | WiFi 2.4G 1T1R |
| Laser color | Green,515-520nm/Blue,450nm |
| Nebula color | Colorful,450nm |
| Shell Material | Flame Retarding V0 Class ABS+PC |
| Application | Indoor(Home/Cafe/Bar/motor homes) |
| Certificate | FDA,FCC,CE,ROHS |
| Control by | Amazon Alexa, Google Home, eco4life APP |
| Timing | Flexible timing |
| Dimensions(cm) | 15L*7.7W*15H |
| Net Weight | 0.45KG |
| Power cord length | 1.8m |

PARTS LIST



① LED light

② Starry light

③ MIC

④ Switch button

When connected to the power supply: Turn on (Blue light+Stars always on)

Button function :

Press the first time: Blue light +Stars breathing blinking.

Press the second time: Nebula color + Stars breathing flashing.

Press the third time: Nebula color + Stars always on.

Press the fourth time: Nebula color.

Press the fifth time: Stars breathing flashing (Turn off for 5 seconds before starting).

Press the sixth time: Music Mode 3.

Press seventh: Turn off.

Note: 1. The breathing and flashing period of the stars is 10 seconds.

2. Since the button has power-off memory function, when you use the button to turn off the device and then turn on the device again, it will return to the last state before turning it off, that is, the second time you use the button to turn on the device ,it will enter the music mode, and then press again to jump to blue light plus star breathing Flashing pattern,loop this way.

3.Please wait 3-5 seconds to press the button after the device is powered on.

BEFORE USE

Inside packaging:

Smart star projector X1pcs

User Manual X1pcs

Accessory X1set

How to begin?

1.Remove the Protective film sticker from laser aperture.

2.Connect the power supply into an available standard electrical outlet.

3.Connect to WIFI.

How to connect to Wi-Fi network?

1. Download eco4life app from Google Play store or Apple Store

Download or scan the QR code and install the eco4life App for either iOS or Android. Once downloaded, the app will ask you to register your device. Enter your phone number or email which one makes you feel comfortable and select the country you live in. If use phone you will receive a text with a registration code.

If you choose email you will then create a password.



Please note: there are two mode configurations (Bluetooth Mode/Quick Mode) available for you to choose from to add the device to the app. **#WFFUPPUI. PEFJT** recommended (Turn on your phone's GPS).

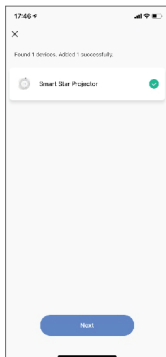
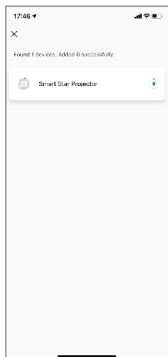
Bluetooth Mode Configuration (Common)

1. Turn on your phone's Bluetooth, press and hold the power button on the Smart star projector for 5 seconds until the LED light blinks rapidly. Enter the add device interface. It automatically says "Devices to be added" then press "Go to add".



2. Enter your Wi-Fi Password and press "Next" to add device.

3. Once connected, the App will prompt the to connect press "Done"

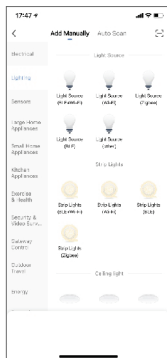
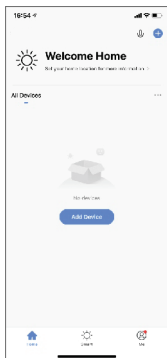


Quick Mode Configuration

1. Make sure quick mode configuration is initiated:

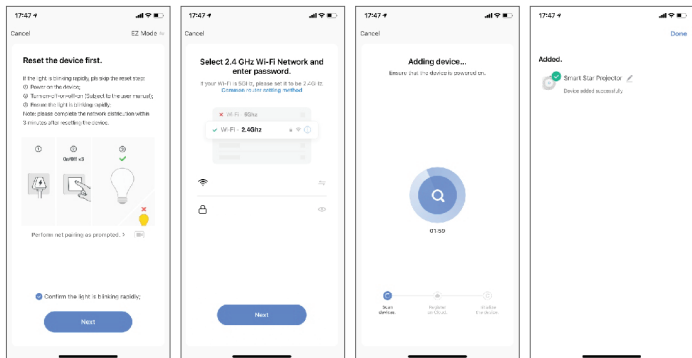
The lighting blinks red rapidly (twice per second). If it blinks red slowly (once every 3 seconds), press and hold the power button for 5 seconds until the lighting blinks rapidly. Connect to the device to the APP to stop the flashing.

2. Tap the icon "+" on the top right, choose any device type and enter into "Add Device".



Please remember to choose the fast blinking

3. Follow the In-app instructions to connect the Smart star projector to your WI-FI network.



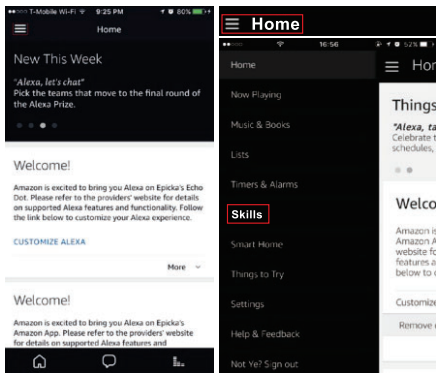
4. Once connected, the App will prompt you to connect. Press "Done"

5. Now you can control Smart star projector through Smart Life APP.

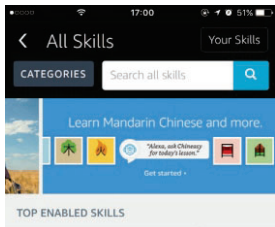
6. Once the configuration has been completed successfully, the indicator light will turn solid and the device will be added to the "Device List".

How to connect Smart Star Projector to Amazon Alexa.

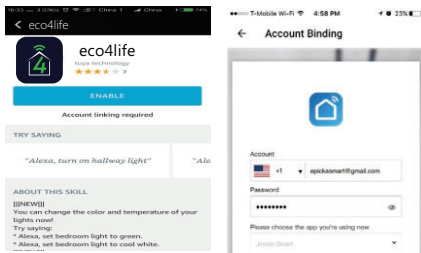
1. Launch eco4life App, sign into your account and make sure Mini Smart star projector is on the device list.
2. Minimize eco4life App, then launch the Alexa App and sign in your Alexa account and make sure you have at least one Alexa smart speaker-controlled device installed like Echo dot, etc.
3. In the upper left corner of Home page, press the ☰ button to show APP Menu. Then select **Skills** in the menu.



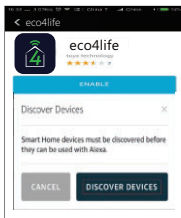
4. Type in "eco4life" in the search and press the search button next to it.



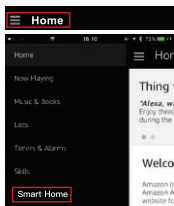
5. Enable eco4life Smart Skill then sign in your Smart Life account to complete your account set up



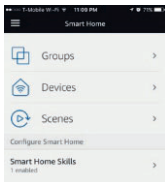
6. Once your account has been successfully linked, ask Alexa to discover devices. After a 20-second searching, Alexa will show all the available devices



7. Go back to Menu by pressing  button, and then press **Smart Home** button.



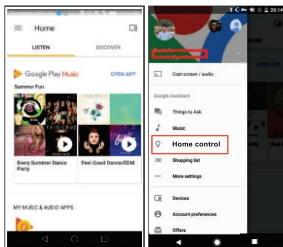
8. In the Smart Home page, you can group your devices in different categories. Your **eco4life** APP has now been paired with Alexa. Now you can control your Smart star projector through Alexa.



How to connect Smart star projector to Google Home

1. Launch the Google Home App and make sure Google Home speaker is installed. If not, please follow Google Home speaker installation instruction to complete the installation.

2. Once Google Home is installed, in the upper left corner of App Home page, Pressing  button to show App menu. Then press “Home Control” in the menu.

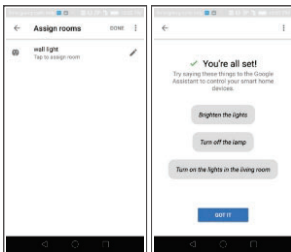


3. After successfully linking your account, in the Google Home App you can see all your smart devices from your Smart Life App account. You can assign rooms for each device.

4. Now you can use Google Home to control your smart device, you can say like.

Ok Google, turn on/off wall light

Ok Google, set bedroom light to red



FAQ

1.What should I do if I can't turn off or turn on the Smart Star Projector?

---Make sure your cellphone and the Smart Star Projector are connected to the same WiFi connection.

2.What should I do when the configuration fails?

---Make sure to connect your Smart Star Projector within a short distance of your internet router;
Check whether the available internet network has a frequency of 2.4GHz;
Check your internet connection is working properly.

3.How can I share devices with my family members?

---Open the eco4life APP, select “profile” >“Devices Sharing”>“Sent” select “Add Sharing”, now you can share with your family members.

4.Can this APP be used on any type of mobile phone? Can I control the device from a distance?

---Yes, the APP can work with both android & IOS systems. Once connected to the Internet, there is no distance limitation.

5.Can I control the devices with a 2G/3G/4G connection?

---The Smart Star Projector devices must be registered first on a WiFi network, after you have successfully connected it, then the Smart Star Projector can be controlled by your Smart Phone with 2G/3G/4G networks.

6.Will it cause a fire or other safety hazards if kept on all night ?

---No, it will be safe to use all night.

7.Can I adjust the brightness on this?

---Yes, you can adjust the brightness on the APP.

8.Is the indirect laser light damaging to eyesight?

---Yes,please do not look directly into the laser.

9.If projected on a ceiling, what is greatest width and height of the projected image?

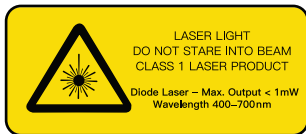
---That depends on the height of the object you place it on.



SUPPORT

For more troubleshooting help, please visit <https://eco4lifehome.com/pages/contact-us> for web support or send us an email at cs@sonicgracehome.com.

You can also go to <https://mall.eco4lifehome.com/pages/support> to download full product manual.



Made in China

Do not look directly into the laser
Not a toy. Not intended
for use by children