

AUSTERE


Power \ Surge Suppressor User Guide/Owner's Manual

VII Series \ Power 4-Outlet

V Series \ Power 4-Outlet

III Series \ Power 4-Outlet

Model numbers: 7S-PS4-US1, 5S-PS4-US1 and, 3S-PS4-US1

 **CAUTION** To reduce the risk of electrical shock, only use **Austere Power** indoors and in cool dry locations. **DO NOT** connect to an ungrounded outlet. **DO NOT** bring power into **Austere Power** with any type of extension cord, adaptor, or ungrounded 2-prong extension. **DO NOT** install Austere Power near any heat-emitting appliances such as radiators or heat registers. **DO NOT** install Austere Power where excessive moisture is present. **DO NOT** drill into any part of the Austere Power housing or open the housing for any reason. There are no user-serviceable parts inside. **DO NOT** plug into another relocatable power tap. **DO NOT** “daisy chain” **Austere Power**. **DO NOT** use with any aquarium equipment.

This product is recommended for use with your home theater equipment, gaming systems, home office equipment, and portable electronic devices. It is not intended for commercial or industrial applications, including high-risk medical devices. Do not use this equipment in the presence of a flammable anesthetic mixture with air, oxygen, or nitrous oxide.

Product Registration

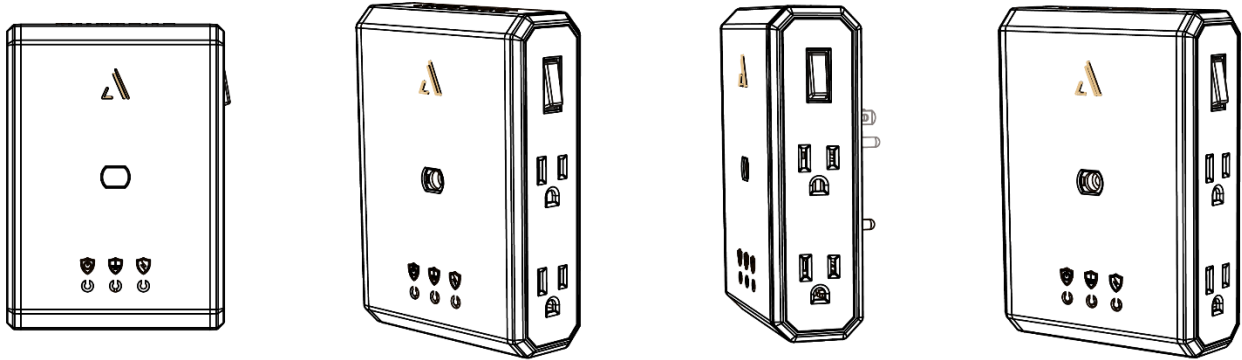
Prior to using your product, please go to www.austere.com/guarantee to register your product and access our complete lifetime guarantee statement.

Safety Instructions

Read this manual thoroughly before use and keep it safe for future reference, along with the purchase receipt and carton. The safety precautions enclosed reduce the risk of fire, electric shock, and injury when correctly adhered to. Follow all instructions and take notice of all warnings to reduce the risk of fire or electric shock. Always exercise caution when operating any electrical device. Install in accordance with the manufacturer's instructions. Turn **Austere Power** off when not in use.

DO NOT use if **Austere Power** becomes damaged or broken. Refer all servicing to qualified service personnel. Servicing is required when Austere Power has been damaged in any way, such as a power-supply plug is damaged, liquid has been spilled, or objects have fallen into the apparatus, the apparatus has been exposed to rain or moisture, does not operate normally, or has been dropped.

DO NOT defeat the safety purpose of the grounding-type plug. A grounding-type plug has two blades and a third grounding prong. The wide blade or the third prong is provided for your safety. If the provided plug does not fit into your outlet, consult an electrician to replace the obsolete outlet. To reduce the risk of electric shock, the grounding of the center pin of this plug must be maintained.

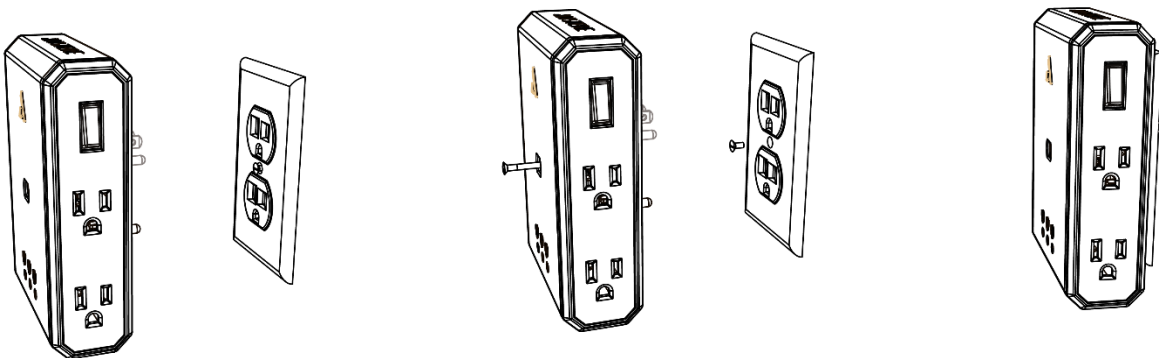


MOUNTING INSTRUCTIONS (OPTIONAL)

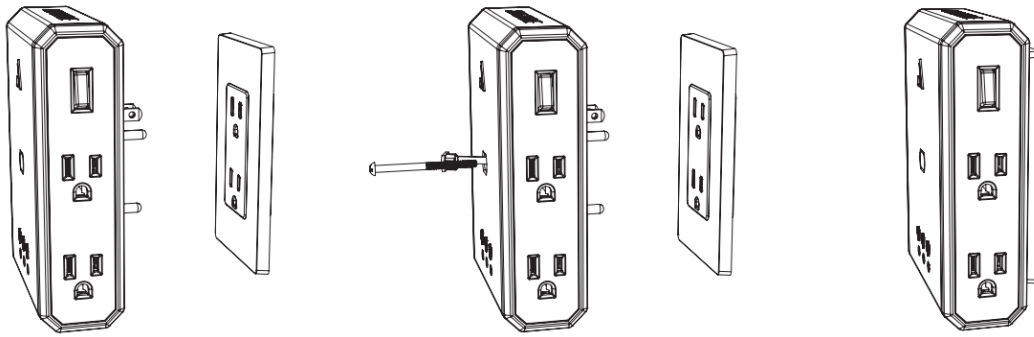
Austere Power 4-outlet is wall mountable and includes a screw for attaching to the outlet.

Install Austere Power with an optional security screw.

1. Simply remove the existing center screw from the outlet cover while keeping the outlet cover in place.
2. Open the removable cover on the front of the **Austere Power 4-Outlet**.
3. Using a Philips head screwdriver and the silver screw included with **Austere Power**, turn the screw into the center of the outlet cover and plug in the unit, and re-position the removable cover.



For outlets without a center screw on the cover, such as Decora outlets, simply open the removable cover on the front of **Austere Power 4-outlet** and remove the screw.



Plug in Austere Power into your AC Power Line: Be sure it is plugged into a standard, 3-wire grounded 120V AC, 60Hz outlet.

Turn your power unit ON: Press the power switch / reset button until the three LED indicator lights illuminate blue, indicating the unit is On and connected to AC input power. **Review the LED status indicator Lights:** Check the LEDs prior to connecting any of your equipment. They will indicate the optimum power operating conditions when plugged into a 120V AC outlet.



Power LED: Will illuminate blue when lit. This indicates that **Austere Power** is plugged in and receiving power.



Ground LED: Will illuminate blue when lit. This indicates that **Austere Power** is plugged into a properly grounded circuit. If the Ground LED does not illuminate, there is something wrong with the electrical wiring to the AC outlet, and we recommend having it inspected by a licensed and insured electrician. **When the Ground LED is not illuminated, your equipment is NOT protected from surge or irregular power events. Powering your equipment with Austere Power in the absence of Ground LED voids the Austere Limited Lifetime Guarantee and the Component Guarantee.**



Protected LED: Will illuminate blue when lit. This indicates **Austere Power** surge suppression components are intact and providing full protection against surges. When the Protected LED no longer illuminates, it is time to replace the unit. **When the Protected LED is not illuminated, your equipment is NOT protected from surge or irregular power events. Powering your equipment with Austere Power in the absence of a Protected LED voids the Austere Limited Lifetime Guarantee and the Component Guarantee.**

Connect Your Equipment:

Plug your equipment's power cords into power AC outlets. All Austere Power products feature expansive SmartFit outlets to accommodate your equipment's transformers without covering neighboring outlets. It is important to remember that you should NOT plug extension cords directly into Austere Power. **DO NOT OVERLOAD** the surge protector's outlets. The surge protector can accommodate a total equipment load of up to 15 amps (whether plugged into a single outlet or spread out over multiple outlets). If the load on the **Austere Power** exceeds 15 amps, the internal circuit breaker will trip, and the outlets will stop providing power. If the circuit breaker trips, reduce the load by unplugging some devices. Reset by cycling the power button from On to Off and then On again. Repeat the process of unplugging a device to reduce the overall load until **Austere Power** remains On delivering power to all connected devices.

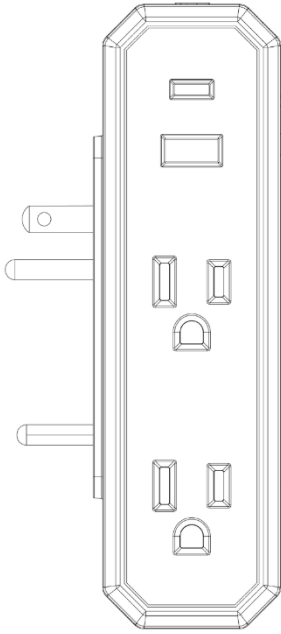
If the Ground LED does not illuminate when plugged in, move **Austere Power** to a different grounded 3-prong AC outlet. If this symptom continues, your outlet may not be properly grounded and needs to be repaired by a professional electrician. **When the Ground LED is not illuminated, your equipment is NOT protected from surge or irregular power events. Powering your equipment with Austere Power in the absence of Ground LED voids the Austere Limited Lifetime Guarantee and the Component Guarantee.**

If the **Protected** LED does not illuminate, the AC line is no longer protected from surges, and the **Austere Power** unit must be replaced. **When the Protected LED is not illuminated, your equipment is NOT protected from surge or irregular power events. Powering your equipment with Austere Power in the absence of a Protected LED voids the Austere Limited Lifetime Guarantee and the Component Guarantee.**

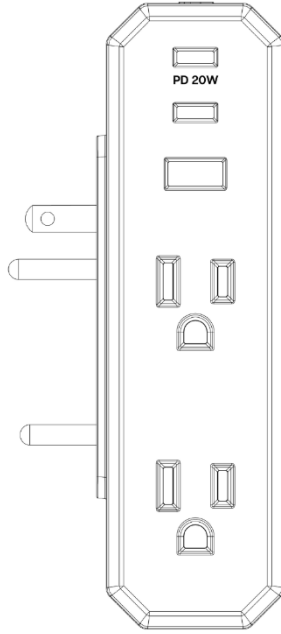
USB Charging Ports:

4-Outlet Power

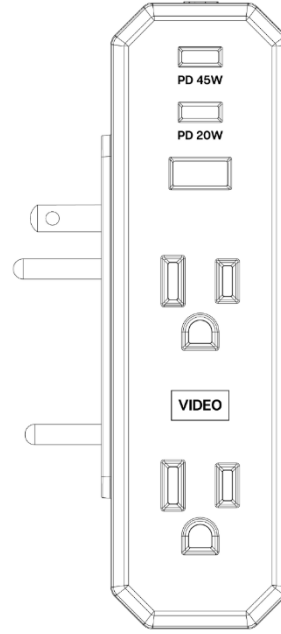
- The III Series 4-Outlet Power has two OmniPort USBs:
 - 1 USB-C, and 1 USB-A, sharing 2.4A.
- The V Series 4-Outlet Power has three OmniPort USBs:
 - 1 USB-C PD 20W
 - 1 USB-C, 1 USB-A, sharing 2.4A.
- The VII Series 4-Outlet Power has three OmniPort USBs:
 - 1 USB-C PD 45W
 - 1 USB-C PD 20W
 - 1 USB-A with dedicated 2.4A.
 - If both USB-C ports are used, the PD 45W is shared.



Austere III Series Power 4-Outlet



Austere V Series Power 4-Outlet



Austere VII Series Power 4-Outlet

Specifications:

- Electrical Rating: 120 Volts AC/15A/1800W
- Maximum Peak Current: 15A
- Surge Protection:
 - III Series 3S-PS4-US1 has 2500 joules.
 - V Series 5S-PS4-US1 has 3000 joules.
 - VII Series 7S-PS4-US1 has 3500 joules.

Additional Safety Precautions

- Only use the hardware provided to secure the product to the wall outlet.
- Caution marking and rating plate are located on the rear enclosure of the product.
- This product must be securely attached to the wall per installation instructions.
- Make sure to keep the outlet cover on when mounting the product to the wall outlet, to avoid possible contact with live electricity.
- Test the strength of attachment to the wall before using the product.
- Do not operate the product where there is potential exposure to flammable liquids or gases.
- Do not operate the product in a wet or high-humidity environment.
- Clean only with a dry cloth.
- Keep away from children. Supervise young children to ensure they do not play with the product. THIS IS NOT A TOY.

4-outlet Certifications:

FCC Compliance Statement

This device complies with part 15 of the FCC rules. Operation is subject to the following two conditions: (1) this device may not cause harmful interference, and (2) this device must accept any interference received, including interference that may cause undesired operation.

Energy Efficiency:

- California Energy Commission's Appliance Regulations (CEC-400-2017-002: Section 1601-1608 of Title 20 of the California Code of Regulations)
- US Department of Energy, 10 CFR Part 429

EMC Compliance:

FCC Part 15 Subpart B, Class B: 2020 and ANSI C63.4; 2014

Electrical Safety United States:

- UL 1310: 2018 Ed. 7 + R:16 Aug 2019
- UL 498A:2008 Ed.2 + R:29 Oct 2022
- UL 1449:2021 Ed.5
- CSA 22.2 #223: 2015 Ed. 3
- CSA 22.2#42: 2010 Ed.7+U1;U2;U3;U4
- CSA 22.2#269.3:2017 Ed. 2

Technical Support: Please contact our technical support team with installation questions, troubleshooting needs, or general product questions.

- Phone: 1-855-672-0684
- Email: [support@austere.com](mailto:support@ austere.com)

Find all documents for Limited Lifetime Guarantee and Component Guarantee at Austere.com.



2023 Austere. All rights reserved. Austere and More Than Expected are trademarks of Austere or its affiliates. All other trademarks are the property of their respective owners.