



### Refractor Telescope with Alt-Az Mount

Congratulations on selecting your new telescope! In order to achieve optimum performance, please follow instructions for proper use and care.

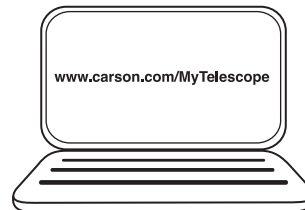
#### PRODUCT SPECIFICATION:

Magnification:	Theoretical Magnification up to 675x	Focal Length / Ratio:	900mm, f/15
Aperture:	60mm (2.4")	Erecting Diagonal:	Orients to Upright View like a Spotting Scope
Optical Design:	Refractor	Finderscope:	5x24mm
Mount Type:	Alt-Az (Tripod included)	Lens Coatings:	Fully Coated
Eyepieces:	H20mm (45x), H12.5mm (72x), SR4mm (225x), Size 1.25"	Erecting Eyepiece:	1.5x
		Barlow Lens:	3x (Triples Magnification)
		Filter:	Green Moon Filter

### ▶ VIDEO TUTORIAL

For details on how to use and align your telescope, please visit:

[www.carson.com/MyTelescope](http://www.carson.com/MyTelescope)



### COMPLETE OPTICAL TUBE ASSEMBLY (OTA)

**Complete Optical Tube Assembly (OTA)**

**OTA Lens Covers**

Some models have two lens covers. Please make sure to remove both before viewing.

**Tripod Legs**

**2 OTA Mount Knobs**

**Alt-Az Mount**

**Altitude Rod**

**Slotted Screwdriver**

**Tray Mount**

**Accessory Tray**

**3 Leg Screws with Wing Nuts**

**Erecting Diagonal**

**Eyepieces**  
H20mm H12.5mm SR4mm

**Finderscope**

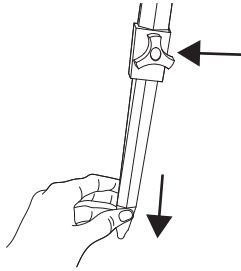
**3 Tripod Leg Knobs**

**3x Barlow Lens**

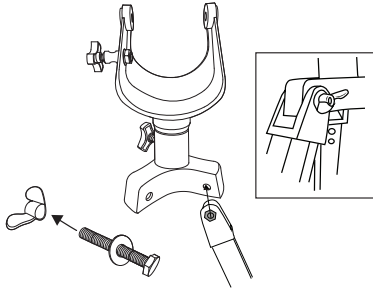
**Green Moon Filter**

**1.5x Erecting Eyepiece**

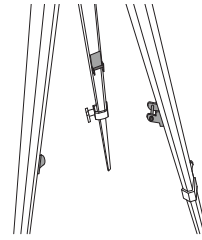
## ASSEMBLING TELESCOPE



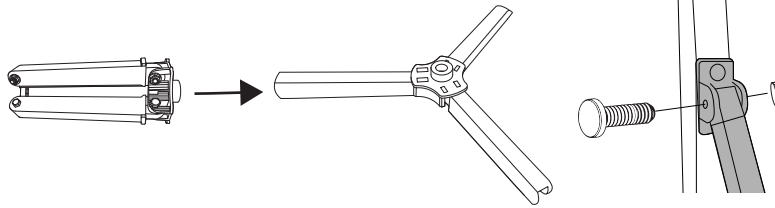
Pull legs down to desired height. Insert a **Tripod Leg Knob** into each of the 3 tripod legs and tighten.



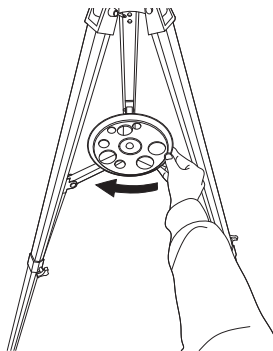
- Remove **Wing Nuts from Leg Screws**. Align holes on top of **Tripod Legs on Alt-Az Mount Base**. Insert Leg Screws into each of the 3 legs and base.
2. Secure with wing nuts.



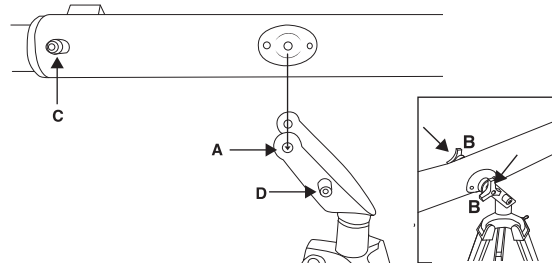
**IMPORTANT:** Tray Mount Brackets on tripod must be facing inside to complete this step.



3. Extend **Tray Mount** to widest position. Remove screws and nuts from end of tray mount. Place mount within **Tray Mount Brackets** (inside tripod legs). Align holes and secure with screws and nuts.

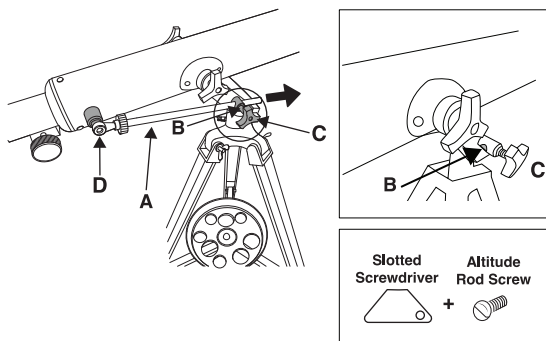


4. Screw the eyepiece **Accessory Tray**, complete with screw, into threaded hole on tray mount.

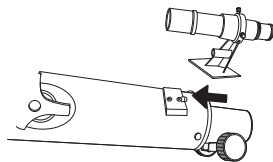


5. Align **Optical Tube (OTA) Mounting Brackets** with holes (**A**) on top of **Alt-Az Mount Arms** and secure with **Mount Knobs (B)**. When attaching optic to mount, make sure **Threaded Holes on OTA (C) and Mount (D)** are facing you to complete step 6.

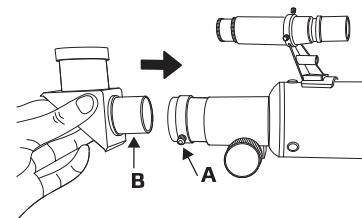
## ASSEMBLING TELESCOPE CONTINUED



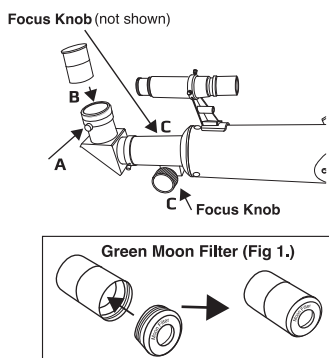
6. Slide **Altitude Rod (A)** through hole **(B)** on **Vertical Adjustment Knob** located on **Alt-Az Mount Arm**. Secure with Vertical Adjustment Knob **(C)**. Use the included **Slotted Screwdriver** to secure Altitude Rod to the **OTA Threaded Hole (D)** with **Altitude Rod Screw**.



7. Slide **Finderscope** into **Finderscope Base** until it locks in place.



8. Loosen thumbscrew **(A)** on **Focuser Draw Tube**. Slide **Erecting Diagonal (B)** into focuser draw tube and tighten thumbscrew **(A)** to secure.

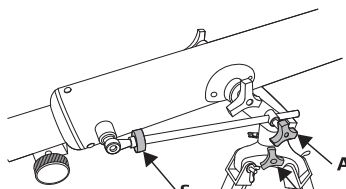


9. Loosen thumbscrew **(A)** on erecting diagonal. Slide **H20 Eyepiece\* (B)** into erecting diagonal and tighten thumbscrew **(A)** to secure. Adjust **Focus Knobs (C)** on OTA until image is clear.

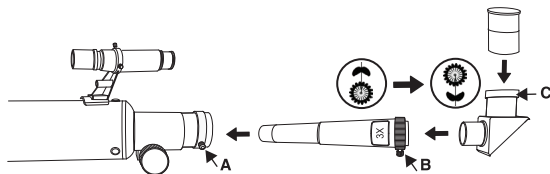
**IMPORTANT:** Erecting diagonal must be used with eyepiece.

**Note:** Eyepieces can be used with included **Green Moon Filter**. Screw in Moon Filter underneath eyepiece (Fig. 1), then insert into Erecting Diagonal.

\*Finding targets will be easier if you start with H20 Eyepiece.

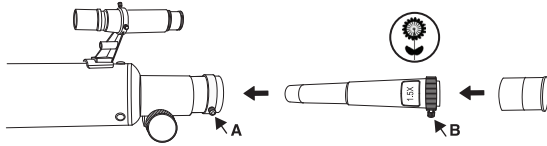


10. To position Optical Tube to desired angle, adjust **Knobs (A/B)**. Use **Fine Adjustment Knob (C)** on the altitude rod to fine-tune vertically, if needed.



11. To triple magnification, remove Erecting Diagonal from Focuser Draw Tube. Insert **3x Barlow Lens** and tighten thumbscrew **(A)** on Focuser Draw Tube to secure. Insert erecting diagonal into Barlow Lens. Tighten thumbscrew **(B)** on Barlow Lens to secure. Insert eyepiece into erecting diagonal and tighten thumbscrew **(C)** on erecting diagonal. Erecting diagonal will correctly orient image.

## ASSEMBLING TELESCOPE CONTINUED



12. To increase contrast, remove Barlow lens and erecting diagonal. Insert **1.5x Erecting Eyepiece** directly into Focuser Draw Tube. Tighten thumbscrew **(A)** on Focuser Draw Tube. Insert Eyepiece into Erecting Eyepiece and tighten thumbscrew **(B)** on Erecting Eyepiece. Erecting Eyepiece will correctly orient view.

### Warnings:

- Never use telescope to look directly at or near the sun. Viewing the sun can cause irreversible eye damage.
- Do not point the telescope at the sun even when you are not looking through it. This can cause internal damage to the telescope.
- Do not leave telescope unattended at any time. Untrained adults or children may not be familiar with the correct operating procedures.
- To maintain internal optical alignment, handle telescope with care.

**Customer service:** If you experience any difficulties, please contact us and we will be happy to help you.



✉ info@carson.com



✉ uksupport@carson.com



✉ eusupport@carson.com

**For warranty information,** visit [www.carson.com/warranty](http://www.carson.com/warranty)