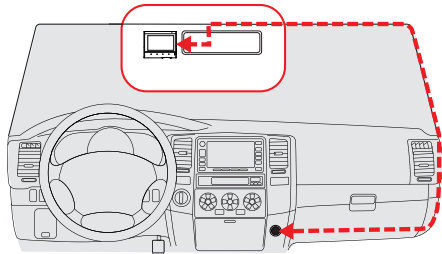


Windshield Mounting



6 Wire Clips & Cable Routing Tool

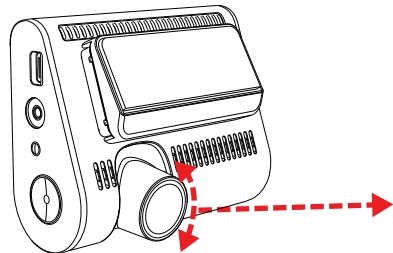


Vehicle Charger



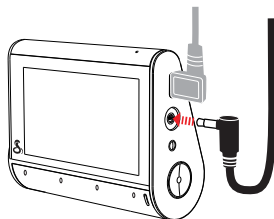
Electrostatic Film

- Find an area on your vehicle's windshield that is centrally located and close to the top of the windshield. Make sure the mounting area on the windshield is clean. The dash cam should be mounted so the display is easily visible to the driver.
(Optional: Place the included electrostatic film on the desired location for a semi-permanent install).
- Plug the power cable into the dash cam and then route the power cable along the headliner using the included tool and cable routing clips as needed.



Rotate front dash cam lens so that it is parallel with the road.

For a View of the Road Behind You



Connect the extension cable to the video input port on the dash cam

Route the extension cable along the headliner or floor to the rear window

Attach FV-RV1 rear camera to the vehicle's back window

! Please position the dash cam on the windshield in the orientation below. Rotate toward the road for the best view.



FV-RV1 Rear View Camera

Rear Cam Extension Cable

Wire Clip

Camera Tips

- Your dash cam features continuous loop recording, which deletes your oldest videos on the included SD card to make space for new recordings. Save your favorite clips from being overwritten by pressing the Action Button.
 - If you need to format the SD card, please do so in the dash cam itself within the settings menu. Do not format the SD card on your PC.
 - The dash cam may occasionally prompt you to format your SD card. This is done to ensure continuous recording operation, but this action will delete your saved footage. Before formatting, download and save your favorite clips using the Drive Smarter® app or by connecting the dash cam to your PC with the included data cable.
 - Parking Mode requires a hardwire connection to the vehicle's battery or OBD-II port to power the dash cam while the vehicle is off (Hardwire Kit available on Cobra.com).
 - Parking Live View requires an internet connection for the dash cam (in-vehicle hotspot or nearby WiFi access point) in order to stream a live feed from the dash cam to the account holder's Drive Smarter app. Please consult the owner's manual for more details.
- !** If upgrading your SD card, please visit Cobra.com for a list of compatible cards.

Cobra

SC 250R

Capture Every Detail

True 4K | 360 Alerts | Rear-View Cam



QUICK START GUIDE

©2024 Cobra Electronics Corporation Version C

Your Cobra® SC 250 pairs with the **Drive Smarter®** app.

DRIVE SMARTER® APP FEATURES:

360 Alerts

Radar, speed, and red light camera alerts

Heads-Up Navigation

Plan routes and easily view upcoming turns

Cloud Video Management

Manage and share footage from your phone

Over-The-Air Updates

Update your camera with the latest firmware and features



Download
DRIVE SMARTER®



Full manual available at: www.cobra.com/manuals

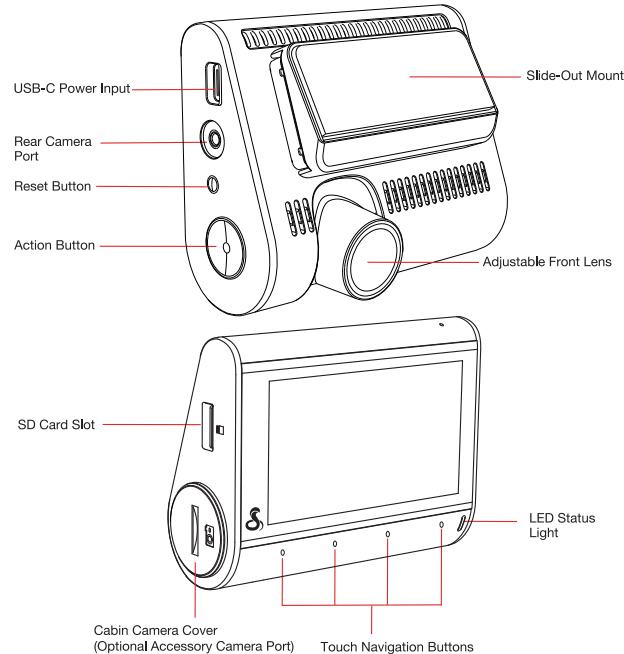
FCC ID:BBOSC250, IC#:906A-SC250 can be found on the device's display by:

1. Power on the device.
2. Select the Settings icon on the bottom right.
3. Navigate to and select the About menu item.

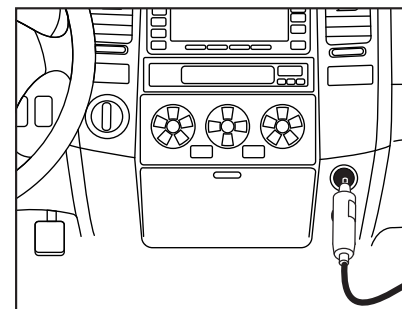
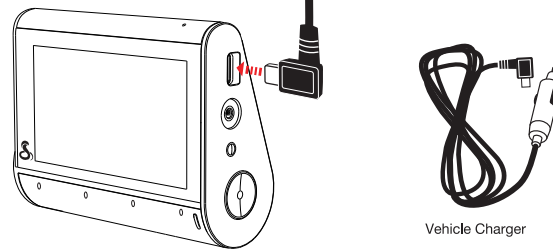
Cobra® and the snake design are registered trademarks of Cobra Electronics Corporation, USA. Cobra Electronics Corporation™ is a trademark of Cobra Electronics Corporation, USA.

Apple and the Apple logo are trademarks of Apple Inc. Registered in the U.S. and other countries. App Store is a service mark of Apple Inc. Google Play, and Android Auto are trademarks of Google LLC. The Bluetooth® word mark and logos are registered trademarks of Bluetooth SIG, Inc. and any use of such marks by Cobra Electronics Corporation is under license.

SC 250R Features

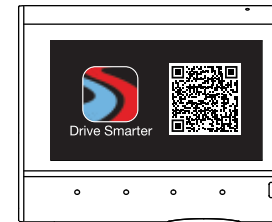


Powering Up the SC 250R



Connect the USB-C cable into the dash cam and plug the power adapter into the vehicle's 12V port

Drive Smarter® App



- Once the dash cam is powered on, follow the on-screen setup instructions to download and connect to the Drive Smarter® app.
- A connection to the Drive Smarter® app is required in order to access features like 360 Alerts, Mayday Alert, Parking Mode Notifications, and Live View.

What's Included

