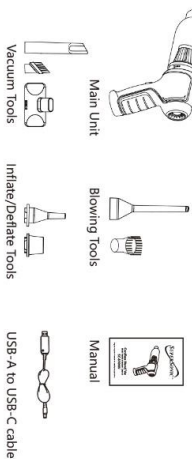


Cordless Hand Vac Multi-Function Vacuum Cleaner SC-810HV

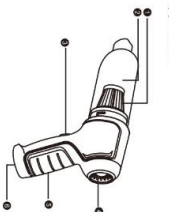
Dry use only. Not intended for wet/liquid application.

Packing List



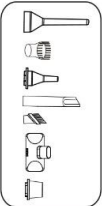
Product View

- ➊ HEPA
- ➋ Power Switch
- ➌ Air Outlet
- ➍ Handle
- ➎ Type C Charging Port



Operation

1. Fully charge the vacuum cleaner before using. Change indicator red light on means in charging, green light on means full charged. Power adapter provided by yourself. Power adapter output request: 5V=1A
2. Based on actual cleaning situation install the suitable accessories to use.



FCC Compliance.
This device complies with part 15 of the FCC Rules. Operation is subject to the following two conditions: (1) This device may not cause harmful interference, and (2) this device must accept any interference received, including interference that may cause undesired operation.

Any Changes or modifications could void the user's authority to operate the equipment.

Note: This equipment has been tested and found to comply with the limits for a Class B digital device, pursuant to part 15 of the FCC Rules. These limits are designed to provide reasonable protection against harmful interference in a residential installation. This equipment generates uses and can radiate radio frequency energy and, if not installed and used in accordance with the instructions, may cause harmful interference to radio communications. However, there is no guarantee that interference will not occur in a particular installation. If this equipment does cause harmful interference to radio or television reception, which can be determined by turning the equipment off and on, the user is encouraged to try to correct the interference by one or more of the following measures:

- Reorient or relocate the receiving antenna.
- Increase the separation between the equipment and receiver.
- Connect the equipment into an outlet on a circuit different from that to which the receiver is connected.
- Consult the dealer or an experienced radio/TV technician for help.

*RF warning for Portable device:

The device has been evaluated to meet general RF exposure requirement. The device can be used in portable exposure condition without restriction.

This device complies with part 15 of the FCC Rules.

Operation is subject to the following two conditions:
(1) this device may not cause harmful interference, and
(2) this device must accept any interference received, including interference that may cause undesired operation.

Important Safety Instruction

SAVE THESE INSTRUCTIONS.

When using an electrical appliance, basic precautions should always be followed, including the following:

Operation

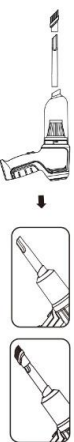
3. Short press button to start working, short press again to stop working.



Installation and Usage for Accessories

Multi-functional Vacuum Tools

1. Crevice Nozzle Extension: for corners, nooks, and other hard-to-reach places such as around car seat gaps, picture frames, cupboards, seats, cabinet corners, drawer drawers, etc.
2. Crevice Nozzle Extension + Large Removable Brush Head: It has double functions of suction and wiping. It is suitable for dust cleaning on the surface of cushions, pads, keyboards, and air conditioner outlets.



3. Wide Floor Nozzle: suitable for dust cleaning for seats, sofas, mattresses, and all kinds of large flat surfaces.



Important Safety Instruction

READ ALL INSTRUCTIONS BEFORE USING THIS APPLIANCE.

Failure to follow the warnings and instructions may result in electric shock, fire and/or serious injury.

WARNING – To reduce the risk of fire, electric shock, or injury:

1. This appliance is to be used by children aged from 8 years and above and persons with reduced physical, sensory or mental capabilities or lack of experience and knowledge if they have been given supervision or instruction concerning use of the appliance in a safe way and understand the hazards involved. Children should not play with the appliance. Cleaning and user maintenance shall not be performed by children without supervision.
2. The appliance is not to be used by persons (including children) with reduced physical, sensory or mental capabilities, or lack of experience and knowledge, unless they have been given supervision or instruction.
3. Do not allow to be used as a toy. Close attention is necessary when used by or near children, pets or plants.
4. Use only as described in this manual. Use only manufacturer's recommended attachments.
5. Do not use with a damaged cord or plug. If appliance has been dropped, damaged, left outdoors, dropped into water, or is not working as it should, return it to a service center.
6. Do not handle type C cable, including plug, and charger terminals with wet hands.
7. Do not put any object into openings. Do not use with any opening blocked, openings and moving parts.
8. Keep hair, loose clothing, fingers, and all parts of your body away from the appliance.
9. Do not use to pick up flammable or combustible liquids, such as gasoline.
10. Do not use in areas where they may be present.
11. Do not use with other battery packs.
12. Always switch off the appliance before making any adjustments.
13. Recharge only with the specified charger. A charger that is suitable for one type of battery pack may create a risk of fire when used with another type of battery pack.
14. Use of any other battery packs may create a risk of injury and fire.
15. Under abusive condition, liquid may be ejected from the battery; avoid contact. If contact accidentally occurs, flush with water. If liquid comes into eye contact, seek medical help. Liquid ejected from the battery may cause irritation or burns.

Installation and Usage for Accessories

Blowing Tools

1. Air Blower Extension-Small Removable Brush Head: suitable for blowing and wiping, it is suitable for blowing off dust on the cushion pad, keyboard, etc.



Inflate / Deflate Tools

1. Inflate Tools: suitable for the inflation of small equipment such as life rings, float tubes, and air mattresses.
2. Deflate Tools: suitable for deflating/compressing household storage bags and air mattresses. This assembly is for air suction only. Do not vacuum any dust or debris without the dustbin and filter attached.



Maintenance

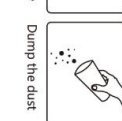
1. Dust bin and HEPA Filter sign remove the dust bin.

➊



2. Remove the HEPA filter from dust bin.

➋



Important Safety Instruction

16. Do not use a battery pack or appliance that is damaged or modified. Damaged or modified batteries may exhibit unpredictable behavior resulting in fire, explosion or risk of injury.

17. Do not expose a battery pack or appliance to fire or excessive temperature. Exposure to fire or temperature above 265°F (130°C) may cause an explosion.

18. Follow all charging instructions and do not charge the battery pack or appliance outside of the temperature range specified in the instructions. Charging improperly or at temperatures outside of the specified range may damage the battery and increase the risk of fire.

19. Have servicing performed by a qualified repair person using only identical replacement parts. This will ensure that the safety of the product is maintained.

20. This appliance contains battery pack. If battery is broken, please contact with after sales service. Do not modify or attempt to repair the appliance or the battery pack except as indicated in the instructions for use and care.

21. Please fully charge the vacuum cleaner before using.

22. The charger is for indoor use only. It is strictly prohibited to use this product at high temperature and high pressure. Only charge, store or use the vacuum cleaner in a dry indoor area where the temperature is from -4°F to 122°F (-20°C to 50°C). Store appropriately indoors in a dry place after use.

23. Do not use to pick up ultra fine particles, such as lime, cement, sawdust, gypsum powder, or ash.

24. Do not use to pick up sharp objects, such as metallic nails, pieces of glass, metal paper clips, or pins.

25. Do not use to pick up hazardous material and chemicals, such as solvent, drain cleaner, strong acids, or strong alkali.

26. Stop using immediately if the appliance is overheating, making unusual noises, producing unusual odors, performing low suction, or leaks electricity.

27. Turn cleaner OFF and disconnect from electrical for long-term storage. If you use the cleaner for a long time, please charge it every 2 month.

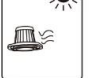
28. Always clean dust bin and HEPA filter after each use to avoid potential blockage, which may lead to low suction power, motor overheating, or reduce the service life of the appliance.

29. Do not place or submerge appliance in standing water or try to clean flooded areas.

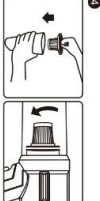
30. All data and technical instructions of this manual are based on results from lab tests of seller or designated third parties. The seller reserves all rights for final explanations.

Maintenance

3. Please use a slightly wet cloth or tissue to clean the dust bin. The HEPA filter is washable and reused but it must be dried before assembly to the machine.



4. Put back the HEPA filter and dust bin shown below picture, insure the dust bin assembly is in the correct place.



Specification

Description	Vacuum Cleaner	Charge Current	5V=1A
Product Size	8.4 x 2.64 x 6.4in	Charge Time	3-4 Hours
Voltage	7.4V	Work Time	20mins
Power	50W	Dust Bin Capacity	300ml

Troubleshooting

NO.	Problem	Reason	Solution
1	Machine can't work	Machine not turn on Battery without power	Turn on the machine Change the machine
2	Machine can't charge	Battery damage Inappropriate adapter used	Change a new battery Adapter request output DC 5V 1A

WARRANTY

Supersonic Inc. ("Supersonic") warrants this product to the original purchaser ONLY, to be free from defects in materials and workmanship under normal use, for ninety (90) DAYS from the date of original purchase. Proof of purchase (receipt) is required. Please visit <https://www.supersonic.com/pages/warranty> for additional information.