

WARNING

1. Read these instructions.
2. Keep these instructions.
3. Heed all warnings.
4. Follow all instructions.
5. Do not use this speaker near water.
6. Clean only with dry cloth.
7. Do not block any ventilation openings.
8. Do not install near any heat sources such as radiators, heat registers, stoves, or other apparatus (including amplifiers) that produce heat.
9. Protect the power cord from being walked on or pinched particularly at the plugs, convenience receptacles, and at the point where it exits from the apparatus.
10. Unplug the apparatus during lightning storms or when unused for long periods of time.
11. Refer all servicing to qualified personnel.
12. This appliance should not be exposed to dripping or splashing water and no objects filled with liquids such as vases should be placed on apparatus.
13. The AC socket it is used to unplug the unit power cord and it must be easily accessible every time it is necessary.
14. Do not place any flame candles or similar flame objects on or near the apparatus.

Dripping Warning: The products should not be exposed to dripping or splashing and that no objects filled with liquids, such as vases, shall be placed on the product.

Plug Warning: The main plug is used as the disconnect device, the disconnect device shall remain readily operate.

Ventilation Warning: The normal ventilation of the product shall not be impeded during intended use. Make sure there is enough space above and besides the holes. Install the unit in a place with suitable ventilation openings (around 7cm).

WARRANTY

Supersonic Inc. ("Supersonic") warrants this product to the original purchaser ONLY, to be free from defects in materials and workmanship under normal use, for ninety (90) DAYS from the date of original purchase. Proof of purchase (receipt) required.

Please visit <https://www.supersonicinc.com/pages/warranty> for additional information.

Specifications

- **Power Supply:** DC5V
- **Maximum Power Consumption:** 20W
- **RMS Power:** 12W
- **System Type:** 2 x 8" Woofer
- **Frequency Response:** 60Hz-18KHz
- **Impedance:** 6Ω
- **Function:** Bluetooth/Micro SD/USB/ FM /TWS/ AUX/Mic Input
- **Micro SD Capacity:** 32 GB
- **USB Drive:** Ver. 2.0 | **Capacity:** 32GB
- **Rechargeable Battery:** 1800mAh
- **Speaker Size:** 11.024 x 9.843 x 16.14 inches
- **Play Time:** Approx. 1.5Hrs
- **Charging Time:** Approx. 5Hrs

Contents

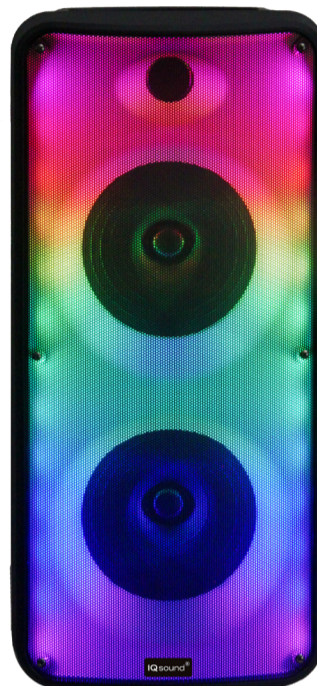
- **2x8" Portable Bluetooth Speaker**
- **Remote Control**
- **One Wired Microphone**
- **Charging Cable**
- **User Manual**

IQ sound®

2x8" | BLUETOOTH® SPEAKER

True Wireless Stereo

- Rechargeable Battery
- FM Radio
- USB/Micro SD Inputs
- AUX Input
- TWS True Wireless Stereo



IQ-7188DJBT

User Manual



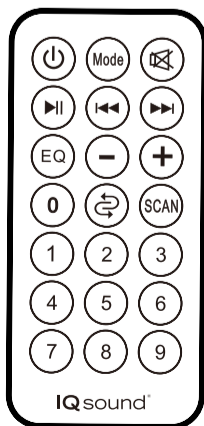
Display

- 1. Input Mode:** The LED display will display the input mode information for USB/Micro SD/Wireless Function/AUX/FM. When a USB/Micro SD drive is connected to the USB/Micro SD port, the unit will automatically switch to USB/Micro SD mode and start playing audio files automatically.
- 2. Track Number:** The Track number being played from USB/Micro SD will be displayed.
- 3. FM Mode:** Press MODE til voice prompts FM Mode, then Press and Hold "Play/Pause" button to automatically scan all stations.

TWS Usage Settings

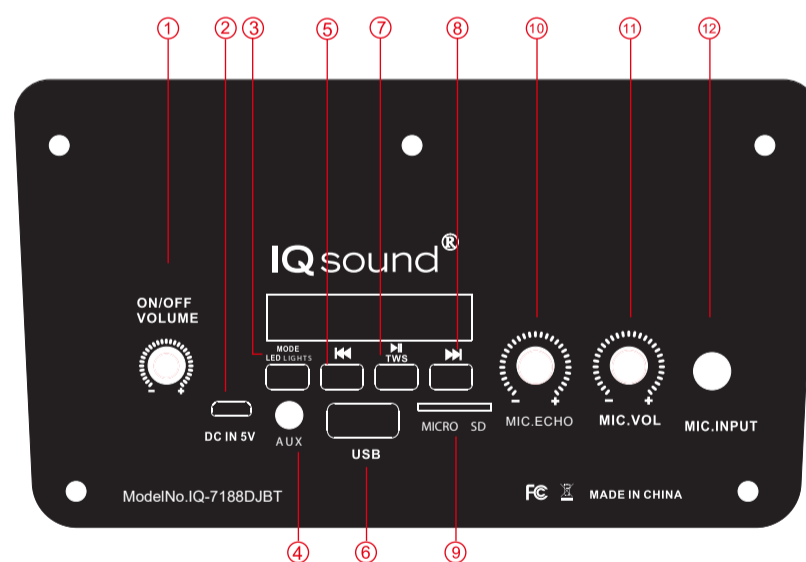
- 1. TWS Connection:** TWS connection is only for two active speakers
- 2. Turn on the Speakers:** Press the MODE button to change the mode to wireless function
- 3. Press and Hold** the TWS button for 3 seconds and the 2 speakers will be linked
- 4. Connect the Phone:** Open the phone's Bluetooth settings, find "IQ-7188DJBT" and connect the device
- 5. Select music from your phone** and enjoy the TWS function playing on both speakers.
- 6. Stop using TWS:** Long Press (about 3 seconds) the TWS button on the device.

Remote Control



1. Standby
2. Mode: USB/MICRO SD/FM/AUX/Wireless function
3. Mute: Mute the Track
4. PLAY/PAUSE
5. Previous Track: Select the previous Track/Channel
6. Next Track: Select the next Track/Channel
7. EQ: Select EQ mode.
8. VOL(-): Reduces the Master Volume
9. VOL(+): Increases Master Volume
10. REP: Repeats the playing track
11. Press to scan stations in FM Mode

Panel Instructions



- 1. Master Volume:** Vol. adjustment and Power On/Off
- 2. DC5V Charging Slot**
- 3. Mode Button:**
Short Press to change the modes: Micro SD /USB /FM/ AUX/Bluetooth
Long Press: Cycle through different Light shows
- 4. AUX-In Port**
- 5. Previous Track/ Channel Button:**
Short Press: Play Previous Track/Channel
- 6. USB slot**
- 7. Play/Pause Button:**
Short Press: Play or Pause
Long Press: (Hold 3 seconds) to TWS connect with another model speaker
- 8. Next Track/ Channel Button:**
Short Press: Play Next Track/Channel
- 9. Micro SD Slot**
- 10. Echo Volume Adjustment**
- 11. Mic Volume Adjustment**
- 12. Mic Input Slot**

Bluetooth Description

Switch the power button to ON to turn on the speaker , a tone will be heard and the speaker enter Bluetooth Mode. Switch the power button to OFF to turn off the speaker . Turn the speaker on, and it will automatically enter into pairing mode and the LED will flash. On your Bluetooth enabled device, navigate to the Bluetooth settings menu turn on the Bluetooth feature , and search for new devices. Wait a few seconds and select "IQ-7188DJBT" The Speaker will emit a tone when successfully paired.

This device complies with Part 15 of the FCC Rules.

Operation is subject to the Following two conditions: (1) this device may not cause harmful interference, and (2) this device must accept any interference received, including interference that may cause undesired operation.