

UHF/VHF PREAMPLIFIER SYSTEM

CLEARSTREAM® JUICE®

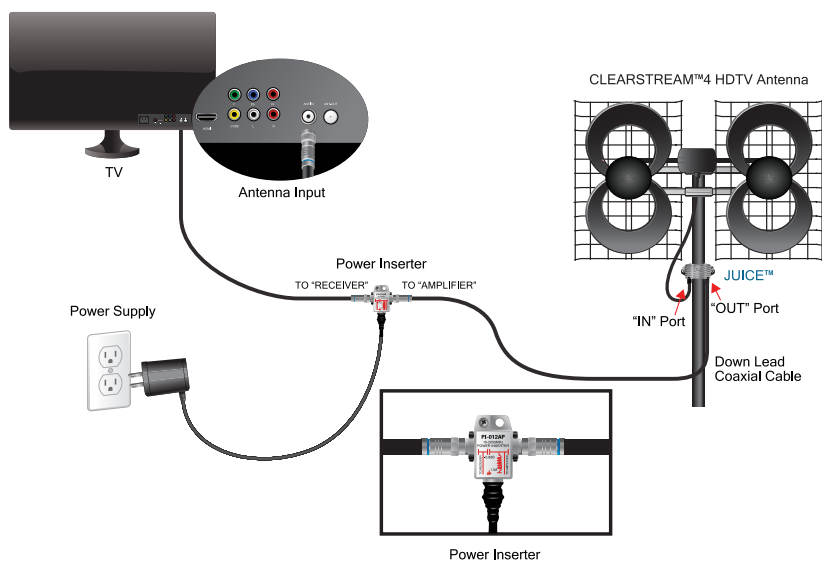
Whether you live in urban, suburban or rural areas, adding the ClearStream® JUICE® UHF/VHF Pre-amplifier System provides ample gain and best-in-class overload protection for dependable reception. The extra JUICE® will help overcome challenges including coaxial cables over 100 ft., the use of splitters, and weak signals. Easy installation and easy to use.

For indoor and outdoor use in urban, suburban, and rural areas.



The ClearStream® JUICE® Comes With:

- JUICE® Pre-amplifier with a Shielded Cast Zinc Weatherproof Housing
- Power Inserter
- DC Power Supply
- 2 - 36" High Performance Coaxial Cables
- 2 - Zip Ties



	MODEL NUMBER JUICE
	GAIN UHF: 19 dB VHF: 17.5 dB
	NOISE FIGURE 1.8 dB
	ASSEMBLED 2" H x 3" W x 1.5" D
	WEIGHT 1 lb
	COLOR Silver/Black
	WARRANTY 90-Days

Cutting the Cord is Easy

